



B&B ELECTRONICS

10/100/1000 Mbps Managed Optical Demarcation Module

iMcV-Giga-FiberLinX-II



PRODUCT FEATURES

- VLAN-Tagging and Q-in-Q Extra/Tagging
- SNMP Manageable
- OAM 802.3ah (Operation, Administration & Management)
- Bi-directional Bandwidth control
- Features powerful LinkLoss, FiberAlert and loopback troubleshooting
- All management traffic remains isolated from the remote LAN

The iMcV-Giga-FiberLinX-II intelligent media converter connects a Host/Remote Ethernet network over a fiber optic or CAT 5 copper connection. It combines media conversion with an advanced-feature set for network management and troubleshooting, including OAM (Operations, Administration and Maintenance), Extra-Tagging and EtherType control functionality. With the iMcV-Giga-FiberLinX-II, administrators can observe the end-points over the fiber segment between them, as a single management entity. Bandwidth scalability and support for MIBs II makes this modular device a versatile gigabit solution, now available as a single wide module.

iMcV-Giga-FiberLinX-II allows for remote configuration and alerts administrators to any potential problems on the long-haul fiber run, provides vital information on link condition and reports data traffic statistics.. In addition to the iMcV-Giga-FiberLinX-II's support for Host/Remote environments, the product also has built-in support for the Unified Management Agent (UMA). With UMA, the central location can manage all Host/Remote pairs installed in an iMediaChassis with the single IP address of the chassis.

Optional single- or dual-SFP port versions or all copper (RJ-45) port versions are also available for complete network flexibility. The iMcV-Giga-FiberLinX-II SFP requires one or two MSA-compliant fiber optic SFP modules (sold separately) to operate. [Copper SFPs are not supported.]

ORDERING INFORMATION

MODEL NUMBER	FIBER	FIBER PORTS	RANGE	ETHERNET PORTS	ETHERNET CONNECTOR
iMcV-Giga-FiberLinX-II TX/SFP					
856-14760	SFP	1	Various	2	RJ45
856-14761	SFP	2	Various	1	RJ45
iMcV-Giga-FiberLinX-II TX/SX, TX/LX					
856-14869	MM850-SC	1	220/550 m	2	RJ45
856-14870	SM1310-SC	1	15 km	2	RJ45
856-14871	SM1310/PLUS-SC	1	40 km	2	RJ45
856-14872	SM1550/LONG-SC	1	80 km	2	RJ45
856-14881	SM1550/XLONG-SC	1	100 km	2	RJ45
SINGLE STRAND FIBER *					
856-14873	SSLX-SM1310-SC	1	15 km	2	RJ45
856-14874	SSLX-SM1550-SC	1	15 km	2	RJ45
856-14890	SSBX-SM1310-SC	1	10 km	2	RJ45
856-14891	SSBX-SM1490-SC	1	10 km	2	RJ45
856-14892	SSBX-SM1310/PLUS-SC	1	30 km	2	RJ45
856-14893	SSBX-SM1490/PLUS-SC	1	30 km	2	RJ45
856-14875	SSLX-SM1310/PLUS-SC	1	40 km	2	RJ45
856-14876	SSLX-SM1550/PLUS-SC	1	40 km	2	RJ45
856-14877	SSLX-SM1490/LONG-SC	1	70 km	2	RJ45
856-14878	SSLX-SM1550/LONG-SC	1	70 km	2	RJ45

* These products have single-strand fiber technology. Deploy in pairs or connect another compatible B&B IMC LLC single-strand fiber product.

iMcV-Giga-FiberLinX-II also available in CWDM Fiber. Call for details.



iView: Windows 2000/XP/Vista/Win7

10/100/1000 Mbps Managed Optical Demarcation Module

iMcV-Giga-FiberLinX-II



SPECIFICATIONS

GENERAL

- Preserves complete end-to-end fiber connection integrity
- Supports Extra Tagging (Q-in-Q)
- Supports 802.3ah OAM (Operation, Administration & Management)
- Bi-directional bandwidth control
- Read/write IEEE 802.1Q VLAN-tags
- QoS: IEEE 802.1p-based packet prioritization (2 queues [high/low] with 8 levels of priority)
- Layer 2 packet switching, store and forward operation
- Forwarding rate: 14,881 pps for 10 Mbps; 148,810 pps for 100 Mbps; 1,488,100 pps for 1000 Mbps
- Auto-Cross for MDI/MDIX
- Features Auto Negotiation and Selective Advertising
- Supports Half and Full-Duplex operation
- MTU: Supports over-sized (Jumbo) packets up to 12196 bytes

SECURITY

- Password Control
- Multiple Access Levels: User Assigned Accounts & Access Levels

MANAGEMENT

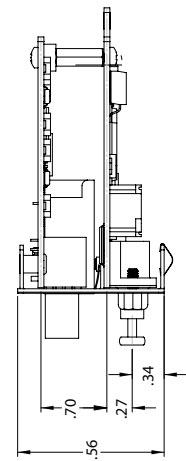
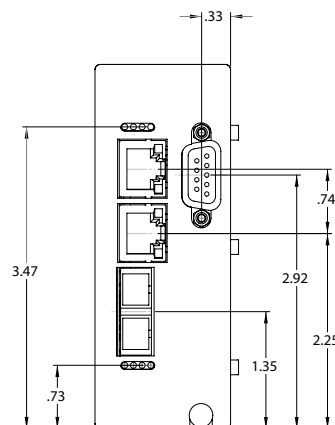
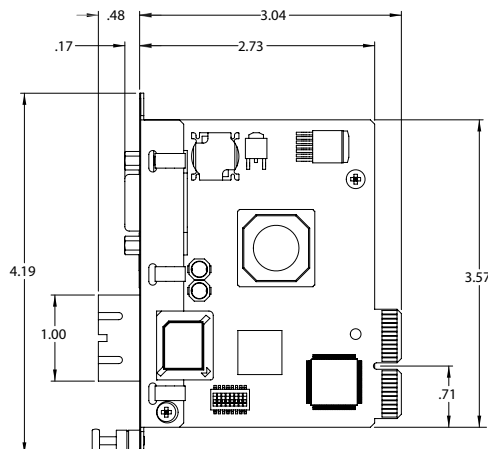
- SNMP V1 and V2c compatible
- Includes GUI-based iView² software for remote management and upgrades
- Monitors far-end (remote) status without a physical presence or separate connection
- IEEE 802.3x Flow Control
- Includes DHCP and TFTP clients
- Supports Telnet
- Includes loopback test modes (MAC swap)
- Includes LinkLoss and FiberAlert
- Supports the Unified Management Agent (UMA)
- Includes status LEDs

ETHERNET PROTOCOLS SUPPORTED

- IEEE 802.3i 10Base-T twisted pair
- IEEE 802.3u 100Base-TX twisted pair
- IEEE 802.3x Flow Control
- IEEE 802.3z 1000Base-X fiber
- IEEE 802.ab 1000Base-T twisted pair

MECHANICAL DIAGRAM

(dimensions in inches)



MECHANICAL

- Dimensions Double Wide Module
- Shipping Weight 0.8 lbs (0.36 kg)

POWER CONSUMPTION

- 580mA at 5V

ENVIRONMENTAL

- Operating Temperature +32° to +122° F (0° to +50° C)
- Storage Temperature -13° to +158° F (-25° to +70° C)
- Operating Humidity 5 to 95% Non-condensing

REGULATORY APPROVALS

- FCC Class A
- UL/cUL, CE, CSA

