

### Professional Weather Station

#### Features

- Plug and Play – Easy setup and operation
- 48 sec data update, instantaneous average and peak
- Inside and Outside Temperature and Humidity
- Solar Insolation and UV Index Measurement
- Wind Speed and Direction Including Average and Gust
- Wind Chill and Dew Point Temperature Display
- Barometric Pressure with last 12hr history
- Rain Gauge with Last Hour, Day, Week, Month or Total
- RCC Clock, Moon Phase and Weather Forecast
- Built-in Data Logging for 4080 Readings: Unlimited with PC
- Settable Alarms and Resettable Min/Max History
- User Programmable Calibration Factors
- Up to 300 Feet Wireless Range Between Transmitter and Base Station
- Solar Powered Transmitter with 2 AA Rechargeable Batteries
- Free WeatherSmart Windows Software with WeatherUnderground Upload



ProWeatherStation™

#### Applications

- Weather Tracking and Forecasting
- Solar Insolation Site Survey – Measure how much sun power is available at a particular site
- Wind Turbine Site Survey – Record wind speed at site over time to determine available true wind power
- Remote Temperature and Humidity Monitoring

#### Description

The ProWeatherStation™ is a high performance wireless data logging weather station with advanced sensor technology resulting in good accuracy at a low cost. It provides instantaneous and historical data on Inside and Outside Temperature and Humidity, Wind Speed (average and gust), Wind Direction, Solar Intensity and UV Index, Barometric Pressure and Rainfall. The backlit base station logs 4080 data points with adjustable (16 second minimum) sample interval. There is a memory meter on the display that shows when the memory is getting full so the data can be downloaded and archived to a computer thru the built in USB port and included WeatherSmart software. The WeatherSmart software also allows for uploading real-time data to WeatherUnderground.

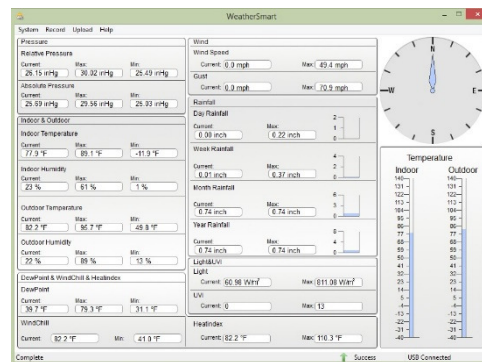
The unit has a radio controlled clock (WWVB) for improved accuracy. The Base Station runs on 3 AA Alkaline or Lithium batteries and can be mounted up to 300 feet away from the transmitter/sensor array. To extend battery life the Base Station can also be powered through USB (included) or a 5V AC Adapter (sold separately). The transmitter/sensor array is solar powered and with 2 AA rechargeable batteries it will run for many years so there are no worries with mounting the array on top of a building or tower.

The ProWeatherStation™ comes with an advanced solar powered sensor array (anemometer, direction meter, temp/humidity sensor, rain gauge, 0.8"OD x 22.5" stainless mounting pole), wireless base station/display, USB cable for connection to a PC, WeatherSmart software and pipe clamps for mounting the sensor array to a mast. Note: 3 AA alkaline or Lithium batteries are required but not included.

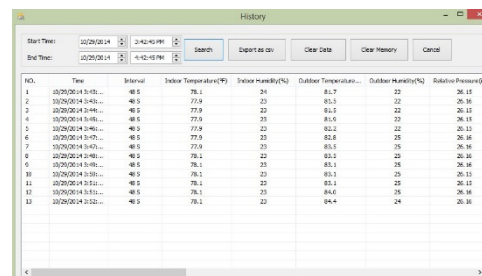
## Specifications

Display Ranges	
<b>Wind Speed</b>	0-112 MPH (0-50m/s) Accuracy: +/- 1m/s (<10 m/s) +/- 10% (>10 m/s) Displays in mph, m/s, km/h, knots or Beaufort
<b>Outdoor Temperature</b>	-40 to 65°C (-40 to 149°F) 0.1 °C resolution Displays in °C or °F Accuracy: +/-1°C
<b>Indoor Temperature</b>	0 to 50°C (32 to 122°F) 0.1 °C resolution Displays in °C or °F Accuracy: +/-1°C
<b>Humidity</b>	1% to 99% (1% resolution) Basic Accuracy: +/-10% @25C 30-80% Accuracy: +/-5% @25C
<b>Rain Gauge</b>	0-9999mm (394 inches) 0.1mm resolution (<1000mm) 1.0mm (>1000mm) Accuracy: +/- 10% Displays in mm or inches (hour, day, week, month or total)
<b>Barometric Pressure</b>	8.85 to 32.5 inHg 0.01inHg resolution Within range 27.13 to 31.89 inHg Accuracy: +/-3 hpa Displays in inHG or hPa
<b>Wind Direction</b>	LCD Compass 22.5° resolution
<b>Light Measurement</b>	0-300,000 lux
Wireless Transmitter / Sensor Array	
<b>Operating Frequency</b>	433 MHz
<b>Update Interval</b>	48 secs
<b>Operating Distance</b>	Up to 100 meters (300 feet) between transmitter and base station
<b>Wind Survivability</b>	200 km/h (125 mph)
<b>Construction</b>	UV resistant white thermoplastic and stainless mounting pole
<b>Batteries</b>	Solar Powered Rechargeable AA Batteries (included)
<b>Mounting</b>	Pole mount using 2 stainless pole clamps
Base Station Specs	
<b>Setup</b>	Base Station or Computer
<b>Display</b>	Backlit LCD, Charcoal Colored Frame
<b>Memory Capacity</b>	4080 data samples (memory meter on display)
<b>Computer Interface</b>	USB
<b>Included Software</b>	WeatherSmart Windows software with WeatherUnderground upload
<b>Batteries</b>	3 type AA LR6 Alkaline (not included) gives 1 year battery life. To extend battery life, Base Station can also be powered via USB (included) or 5V AC adapter (sold separately).
<b>Dimensions (L x W x H)</b>	177 x 152 x 50mm (7" x 6" x 2")
<b>Mounting</b>	Wall or desktop
General Specs	
<b>Settable Alarms</b>	Temp, Humidity, Wind Chill, DewPoint, Rainfall, Wind Speed, Wind Gust, Barometric Pressure, Light, UV Index, Heat Index
<b>Alarm duration</b>	Up to 120 seconds
<b>Time Setting</b>	Automatic thru WWVB or manual, Perpetual Calendar
<b>Time Display</b>	12hr or 24hr
<b>Shipping Weight</b>	2.3kg (5lbs) Note: Some assembly required.
<b>Warranty</b>	1 Year
<b>System Ordering</b>	TP2700WC Data Logging Wireless Solar Weather Station

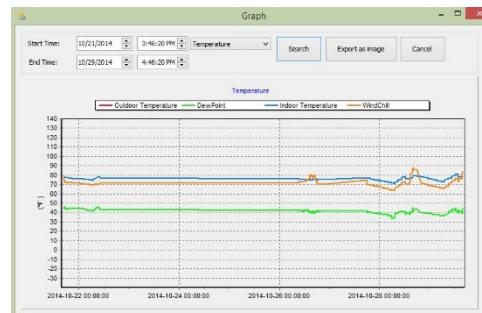
### WeatherSmart Software



Main EasyWeather Screen



Stored Data in Text Format – can export to Excel



Stored Data in Graph Format



14641 S 800 W Ste A  
Bluffdale, UT 84065  
PH: 801-432-0003  
FAX: 801-618-4220

For further information contact: [ProWeatherStation.com](http://ProWeatherStation.com)