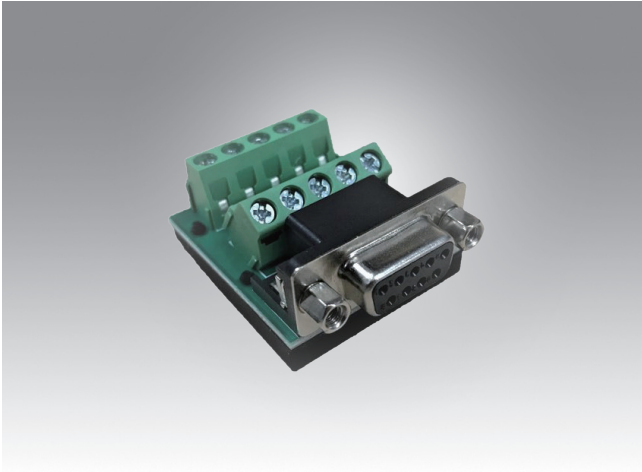


# OPT Series for Communication Card



## OPT1-DB9E

DB9 to 10-pin wiring board

### Features

- Dimensions ( W x L x H): 35 x 42 x 20 mm (1.37" x 1.65" x 0.78")
- Ordering Information:  
OPT1-DB9E-AE: DB9 to 10-pin wiring board



## OPT4A

30cm Male DB-37 to 4x Male DB9 Cable

### Features

- Ordering Information:  
OPT4A-AE: 30cm Male DB-37 to 4x Male DB9 Cable



## OPT8H

1m Male DB-62 to 8x Male DB-9 Cable

### Features

- Ordering Information:  
OPT8H-AE: 1m Male DB-62 to 8x Male DB-9 Cable



## OPT8J

1m Male DB-78 to 8x Male DB-9 Cable

### Features

- Ordering Information:  
OPT8J-AE: 1m Male DB-78 to 8x Male DB-9 Cable