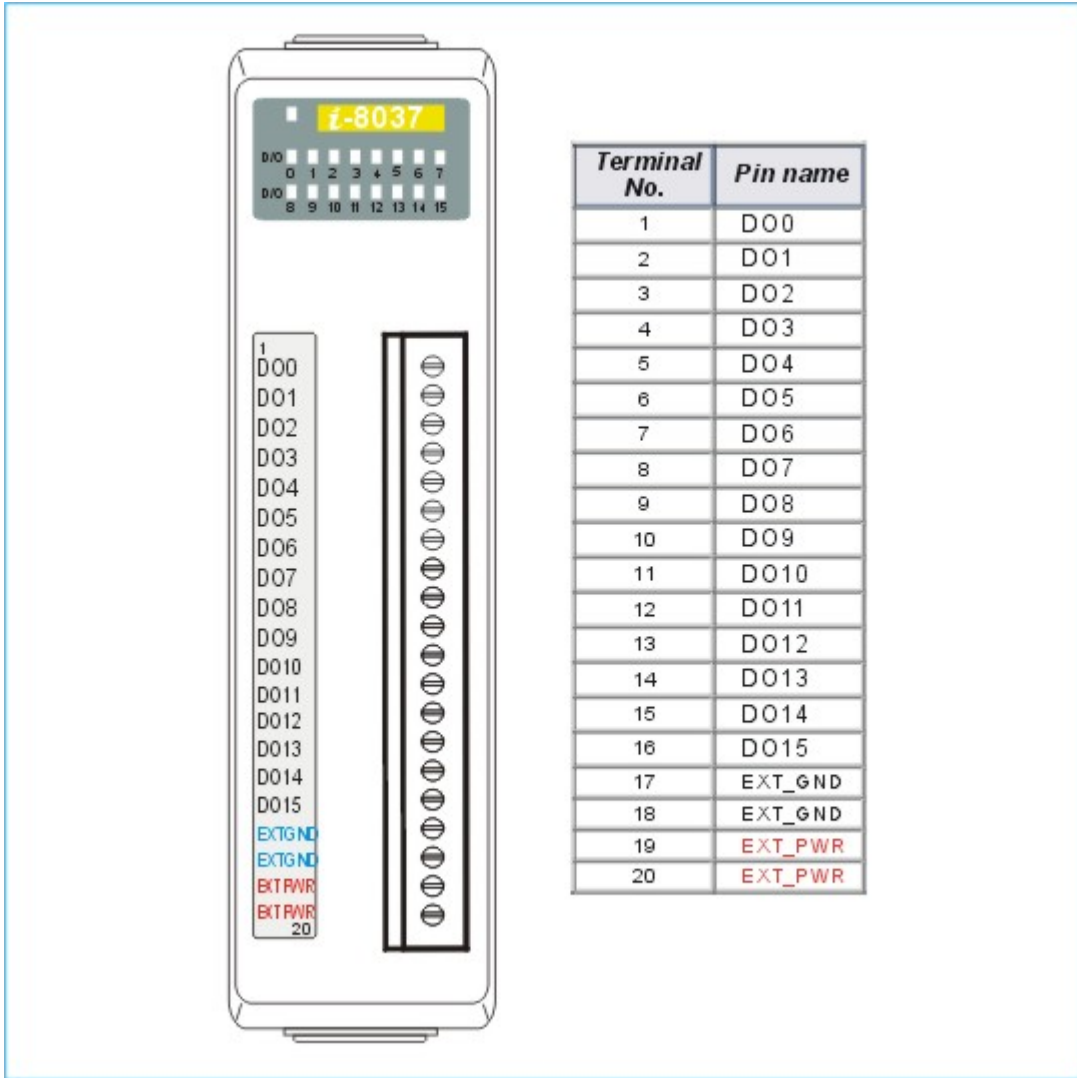


# Digital I/O Modules

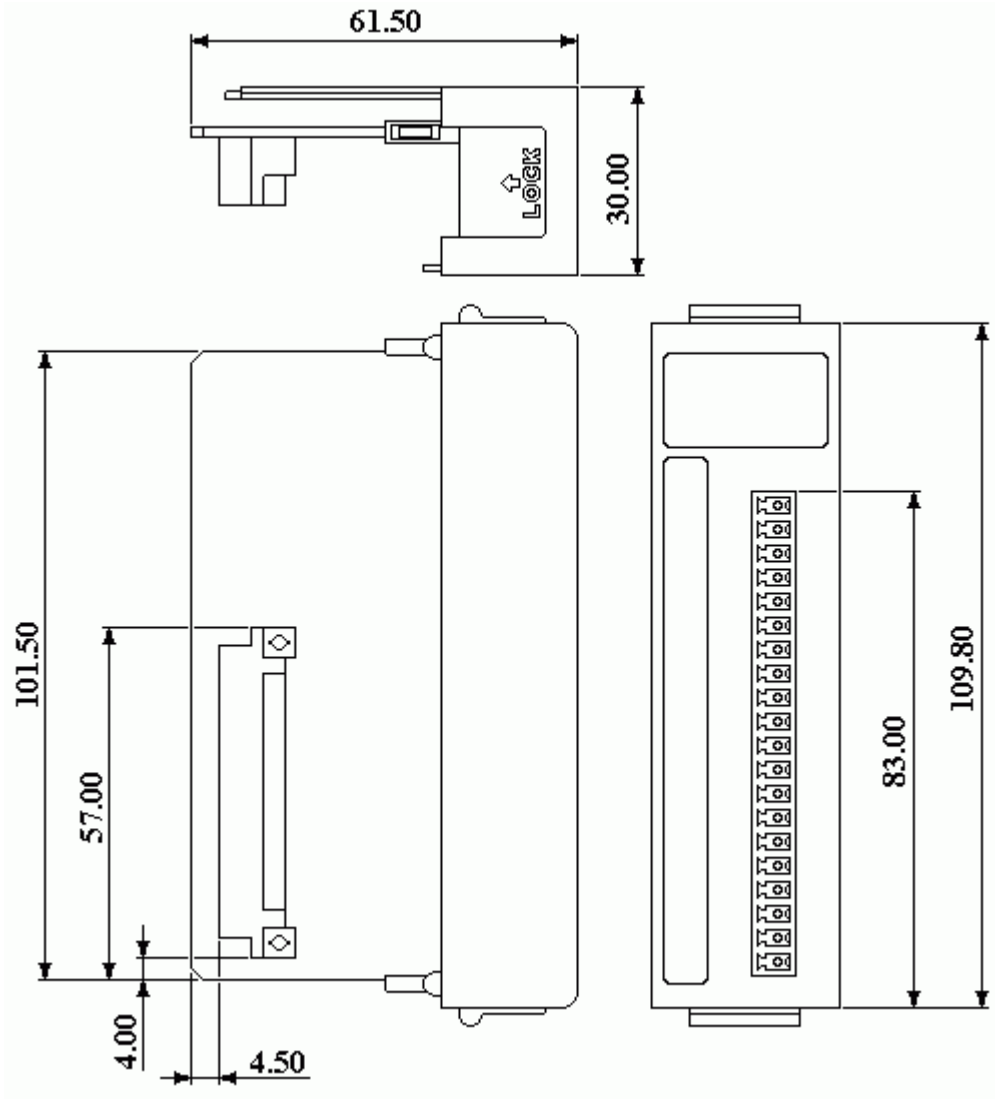
## I-8037 Specification

<b>Digital Output</b>	Output Channel	16
	Output Type	Open-Drain (source)
	Max load current	100mA per channel
	Load Voltage	30VDC (maximum)
	Isolation Voltage	3750 Vrms
<b>LED Display</b>	1 LED as Power/Communication indicator 16 LEDs as digital output indicators	
<b>Power Consumption</b>	0.5 W	

## I-8037 Pin Assignment



**I-8037 Dimention**

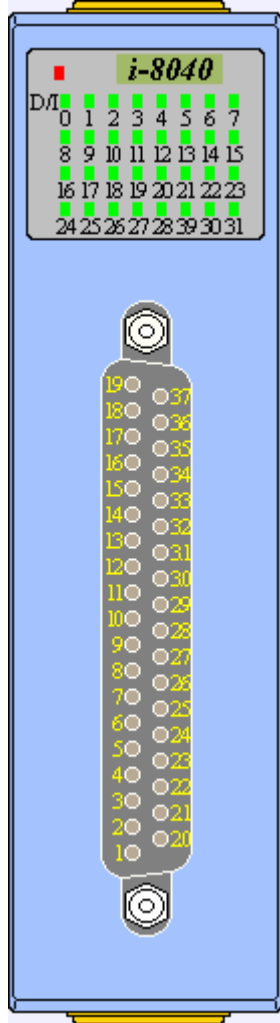


### I-8040 Specification

<b>Digital Input</b>	Inputs per module	32 (sink/source)
	Input voltage range	30 VDC
	OFF voltage level	1.0 VDC (maximum)
	ON voltage level	3.5 VDC (minimum)
	Input Impedance	3K Ohms
	Isolation Voltage	3750Vrms
<b>LED Display</b>	1 LED as power/communication indicator	

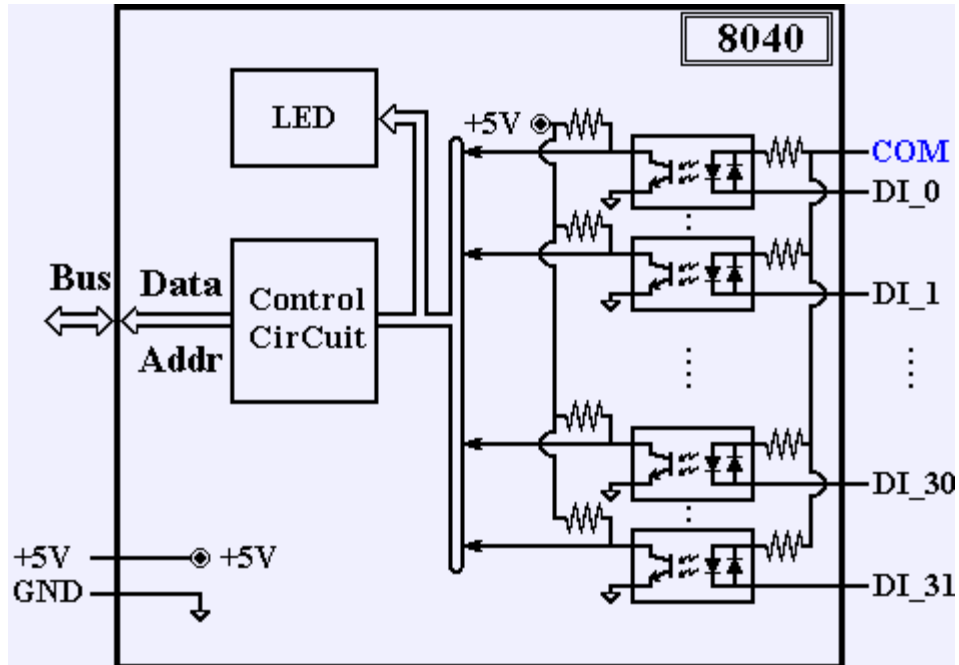
	32 LEDs as digital input indicators
<b>Power Requirement</b>	DC 5V, 50mA maximum

### I-8040 Pin Assignment

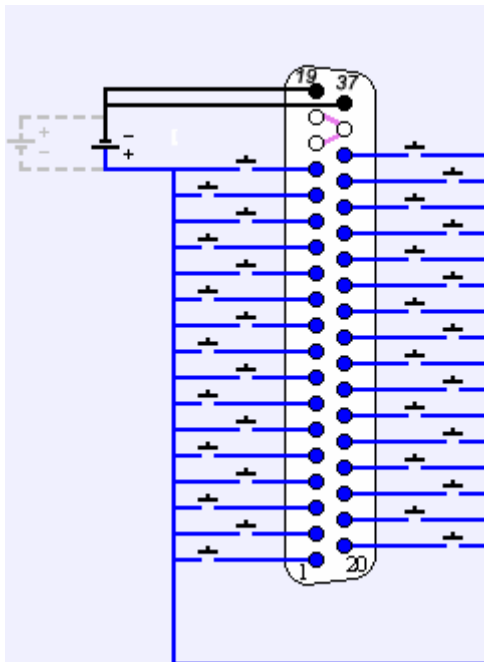


Terminal Number	Pin Name	Terminal Number	Pin Name
19	COM		
18	NC	37	COM
17	NC	36	NC
16	DI_15	35	DI_31
15	DI_14	34	DI_30
14	DI_13	33	DI_29
13	DI_12	32	DI_28
12	DI_11	31	DI_27
11	DI_10	30	DI_26
10	DI_9	29	DI_25
9	DI_8	28	DI_24
8	DI_7	27	DI_23
7	DI_6	26	DI_22
6	DI_5	25	DI_21
5	DI_4	24	DI_20
4	DI_3	23	DI_19
3	DI_2	22	DI_18
2	DI_1	21	DI_17
1	DI_0	20	DI_16

### I-8040 Block Diagram



**I-8040 Wire Connection**

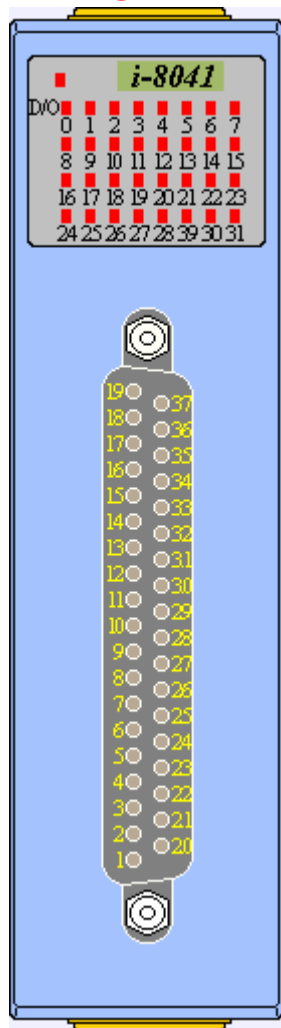


**I-8041 Specification**

<b>Digital Output</b>	Outputs per module	32
-----------------------	--------------------	----

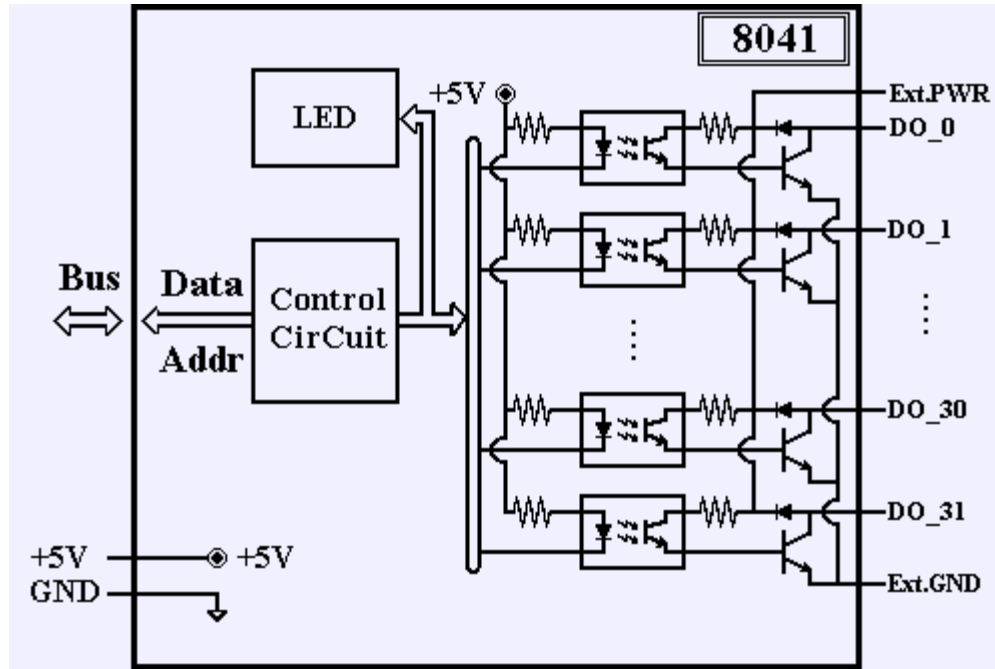
	Load Voltage	5VDC to 30VDC
	Load Current	100mA (maximum)
	Isolation Voltage	3750Vrms
<b>LED Display</b>	1 LED as power/communication indicator 32 LEDs as digital output indicators	
<b>Power Requirement</b>	DC 5V, 50mA maximum	

### I-8041 Pin Assignment

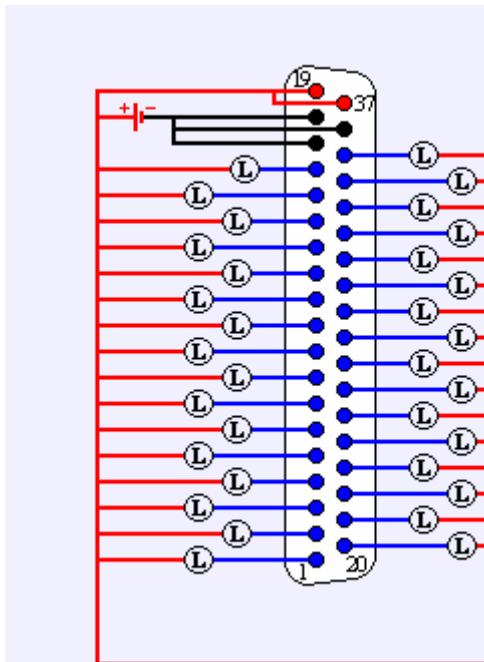


Terminal Number	Pin Name	Terminal Number	Pin Name
19	Ext.PWR		
18	Ext.GND	37	Ext.PWR
17	Ext.GND	36	Ext.GND
16	DO_15	35	DO_31
15	DO_14	34	DO_30
14	DO_13	33	DO_29
13	DO_12	32	DO_28
12	DO_11	31	DO_27
11	DO_10	30	DO_26
10	DO_9	29	DO_25
9	DO_8	28	DO_24
8	DO_7	27	DO_23
7	DO_6	26	DO_22
6	DO_5	25	DO_21
5	DO_4	24	DO_20
4	DO_3	23	DO_19
3	DO_2	22	DO_18
2	DO_1	21	DO_17
1	DO_0	20	DO_16

### I-8041 Block Diagram



### I-8041 Wire Connection



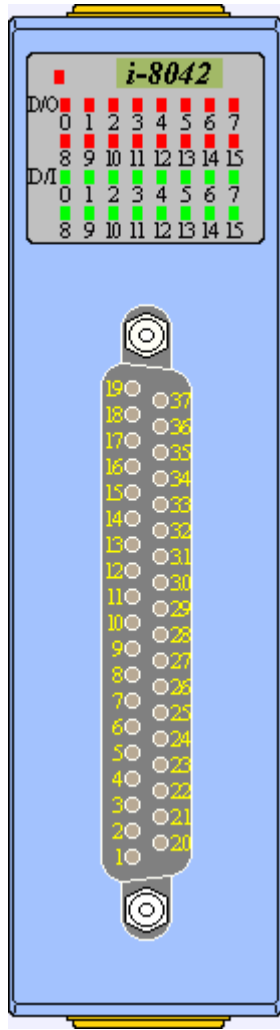
### I-8042 Specification

Digital Output	Outputs per module	16
----------------	--------------------	----

	Load Voltage	5VDC to 30VDC
	Load Current	100mA (maximum)
	Isolation Voltage	3750Vrms
<b>Digital Input</b>	Inputs per module	16
	Input voltage range	30 VDC
	OFF voltage level	1.0 VDC (maximum)
	ON voltage level	3.5 VDC (minimum)
	Input Impedance	3K Ohms
	Isolation Voltage	3750Vrms
<b>LED Display</b>	1 LED as power/communication indicator 16 LEDs as digital output indicators 16 LEDs as digital input indicators	
<b>Power Requirement</b>	DC 5V, 50mA maximum	

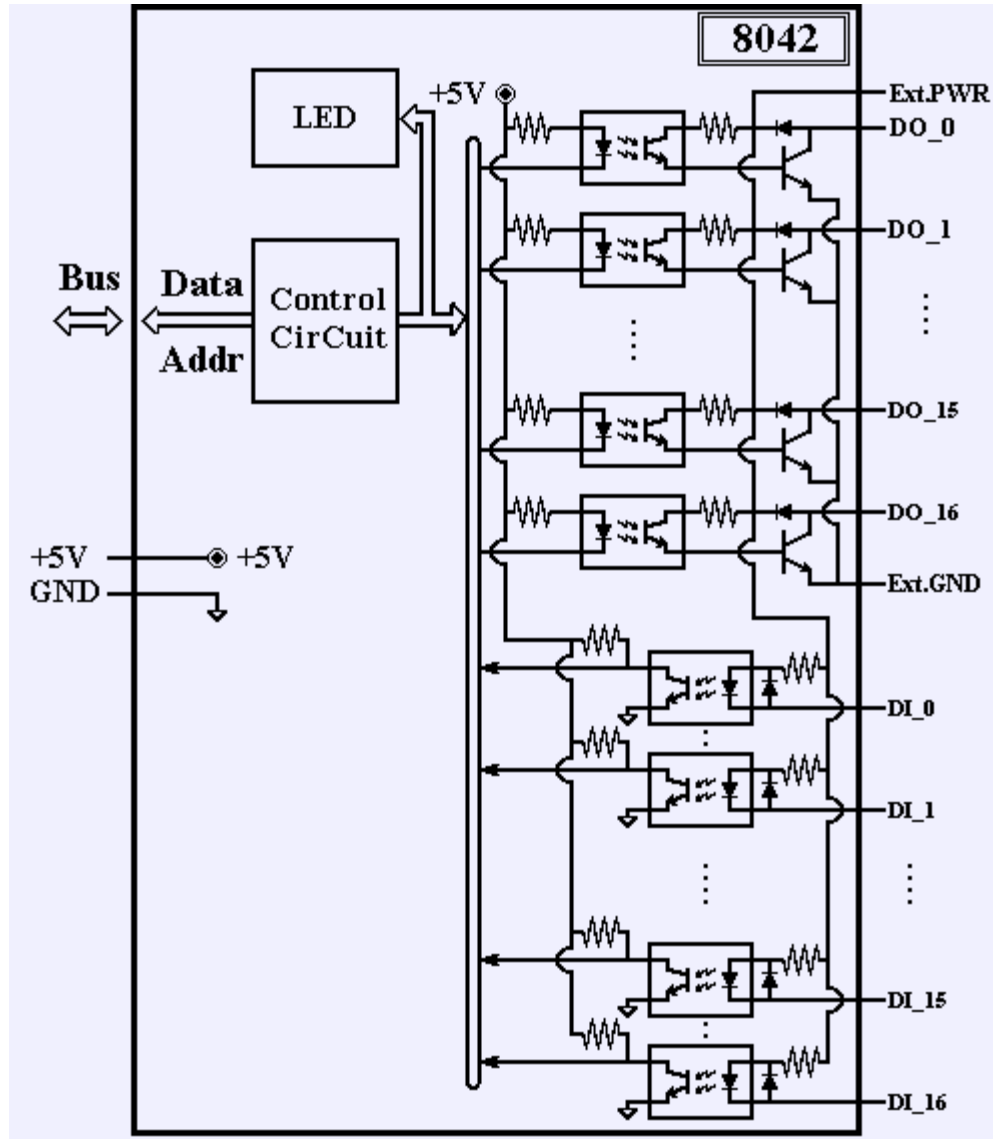
### **I-8042 Pin Assignment**



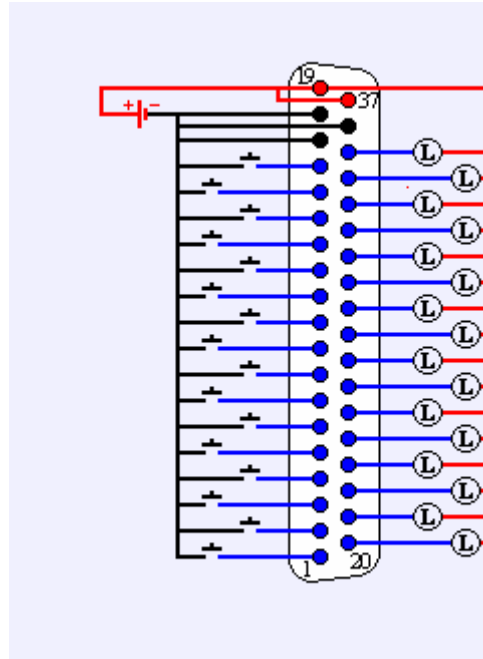


Terminal Number	Pin Name	Terminal Number	Pin Name
19	Ext.PWR		
18	Ext.GND	37	Ext.PWR
17	Ext.GND	36	Ext.GND
16	DI_15	35	DO_12
15	DI_14	34	DO_13
14	DI_13	33	DO_14
13	DI_12	32	DO_15
12	DI_11	31	DO_8
11	DI_10	30	DO_9
10	DI_9	29	DO_10
9	DI_8	28	DO_11
8	DI_7	27	DO_4
7	DI_6	26	DO_5
6	DI_5	25	DO_6
5	DI_4	24	DO_7
4	DI_3	23	DO_0
3	DI_2	22	DO_1
2	DI_1	21	DO_2
1	DI_0	20	DO_3

**I-8042 Block Diagram**



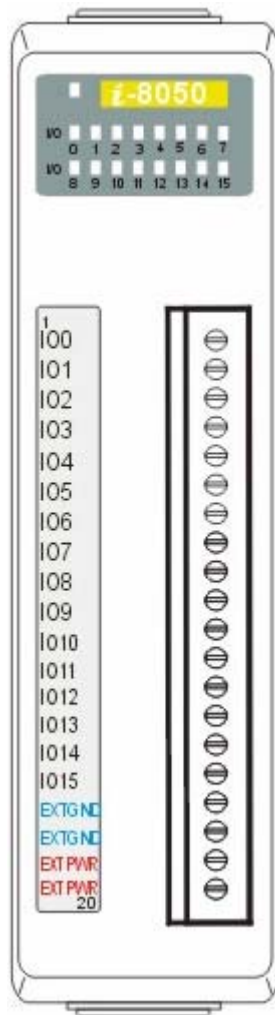
**I-8042 Wire Connection**



### I-8050 Specification

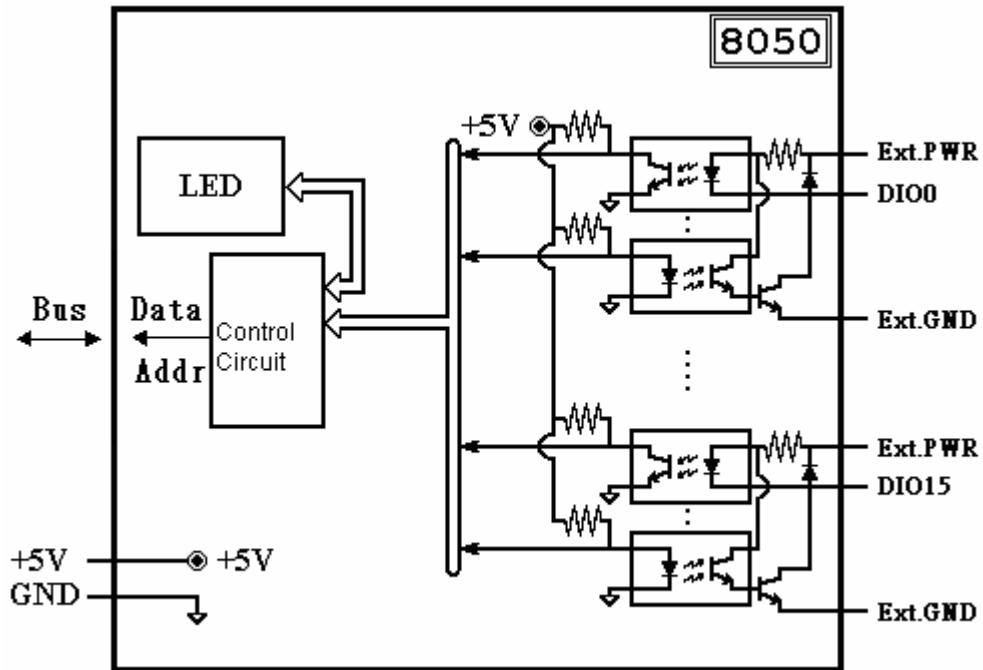
<b>Channel</b>	8050 is a <b>16</b> -channel universal digital I/O module. Each channel can be configured to be a Digital input or Digital output by <b>programming</b> .
<b>Digital Input</b>	<ul style="list-style-type: none"> <li>• Logical 0 : + 1 V Max (off status).</li> <li>• Logical 1 : + 3.5 to +30V (on status).</li> <li>• Input impedance : 3K<math>\Omega</math>.</li> <li>• Isolated voltage : 3750V rms.</li> </ul>
<b>Digital Output</b>	<ul style="list-style-type: none"> <li>• Output type : Open-collector.</li> <li>• Output range : 100mA/each channel, 30V max.</li> <li>• Isolated voltage : 3750V rms.</li> </ul>
<b>LED Display</b>	<ul style="list-style-type: none"> <li>• 1 LED as Power</li> <li>• 16 LEDs as digital input/output indicators</li> </ul>
<b>Power Requirement</b>	1 W
<b>Temperature</b>	Operating temp : -25 $^{\circ}$ C ~ +75 $^{\circ}$ C Storage temp : -40 $^{\circ}$ C ~ +80 $^{\circ}$ C

## I-8050 Pin Assignment



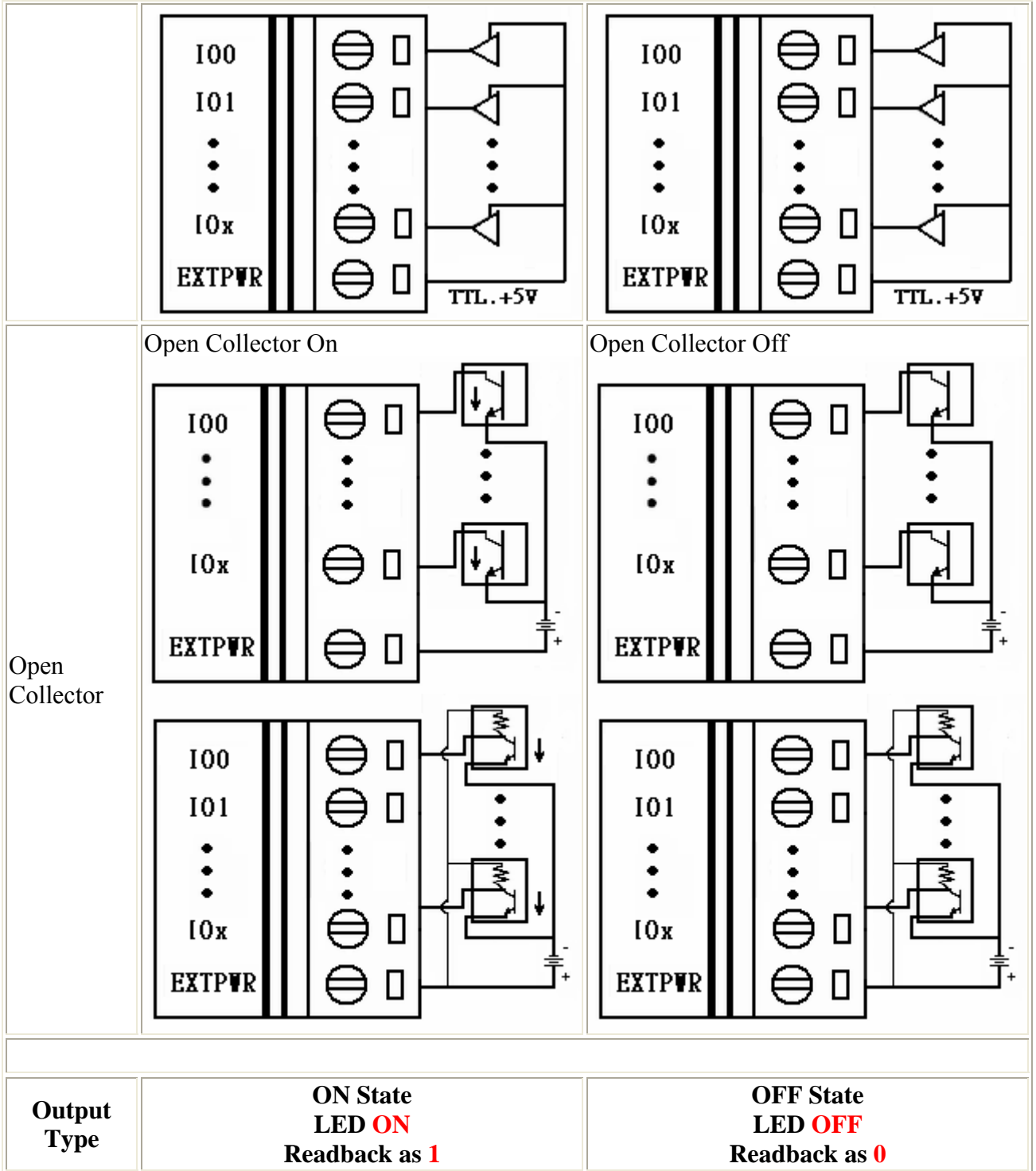
Terminal Number	Pin Name
1	DIO0
2	DIO1
3	DIO2
4	DIO3
5	DIO4
6	DIO5
7	DIO6
8	DIO7
9	DIO8
10	DIO9
11	DIO10
12	DIO11
13	DIO12
14	DIO13
15	DIO14
16	DIO15
17	Ext. GND
18	Ext. GND
19	Ext. PWR
20	Ext. PWR

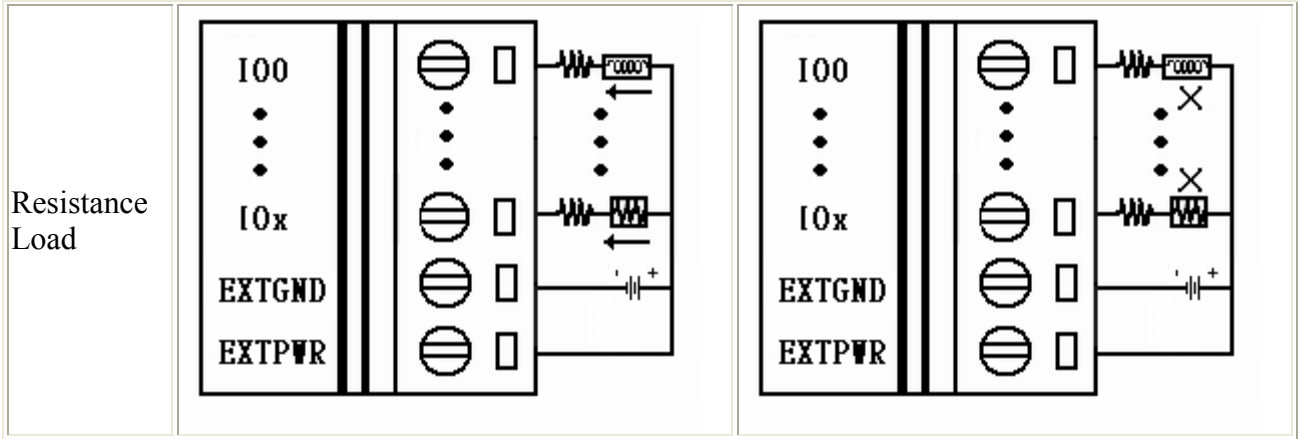
## I-8050 Internal I/O Structure



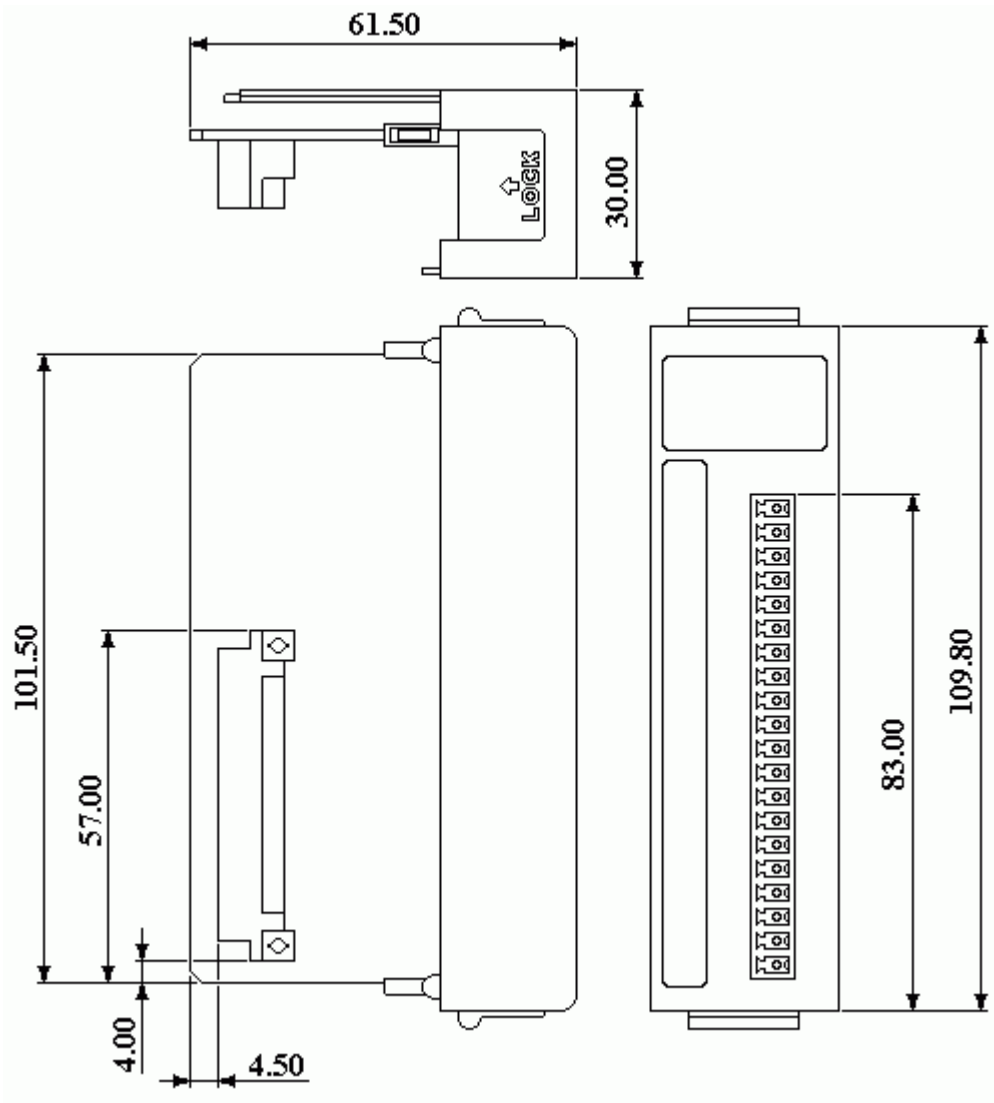
### I-8050 Wire Connection

Input Type	ON State LED ON Readback as <b>1</b>	OFF State LED OFF Readback as <b>0</b>
Relay Contact	Relay ON 	Relay Off 
TTL/CMOS Logic	Voltage < 1V	Voltage > 3.5V



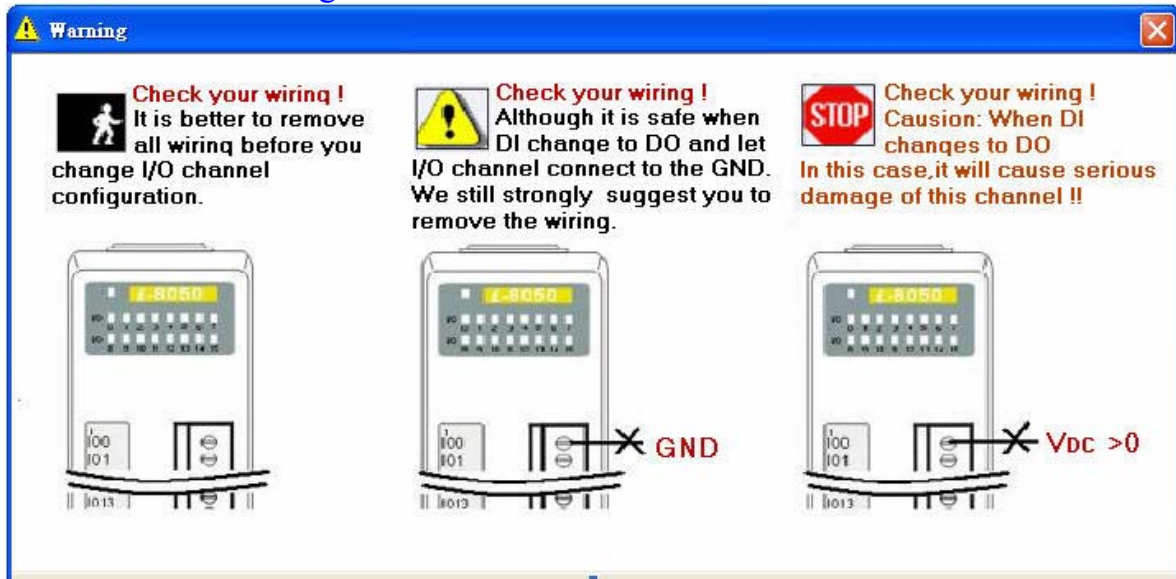


### I-8050 Dimension



## Warning

A channel may be damaged if it is subjected to an input signal while this channel status is changed from DI to DO. Please remove the input signal before the channel status is changed.

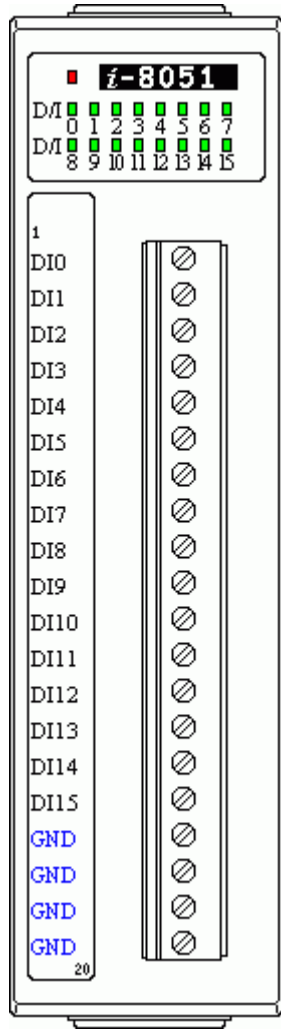


## I-8051 Specification

<b>Digital Input</b>	Input Channel	16
	Input Type	Non-Isolated digital input
	ON State	Input voltage < 1V
	OFF State	Input voltage > 3.5V
<b>LED Display</b>	1 LED as Power 16 LEDs as digital input indicators	
<b>Power Consumption</b>	Typical : 0.25W Maximum : 0.4W	
<b>Note</b>	8051 : Internal Parallel Bus	

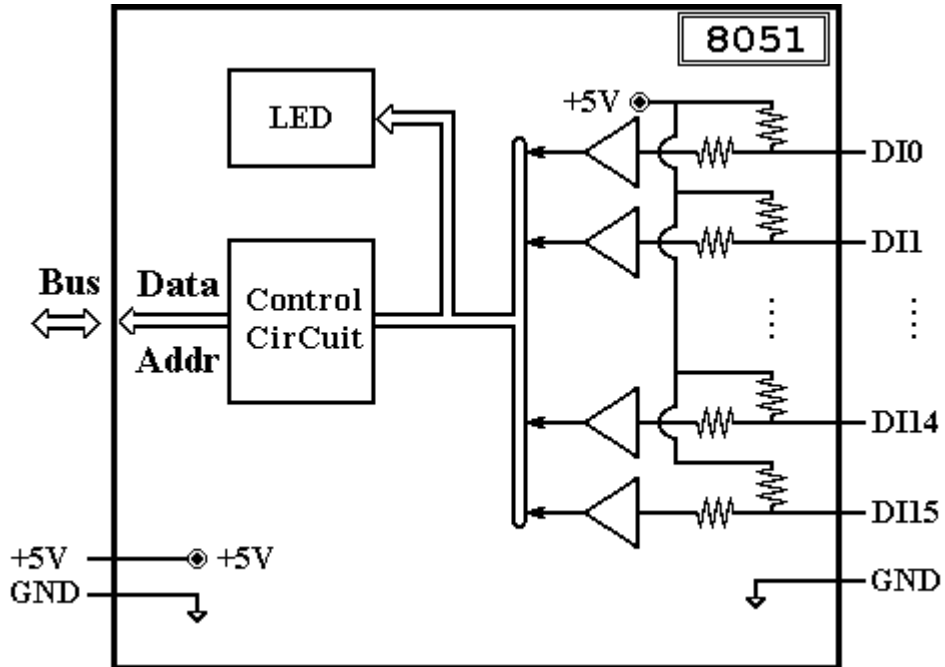
## I-8051 Pin Assignment





Terminal Number	Pin Name
1	DI0
2	DI1
3	DI2
4	DI3
5	DI4
6	DI5
7	DI6
8	DI7
9	DI8
10	DI9
11	DI10
12	DI11
13	DI12
14	DI13
15	DI14
16	DI15
17	GND
18	GND
19	GND
20	GND

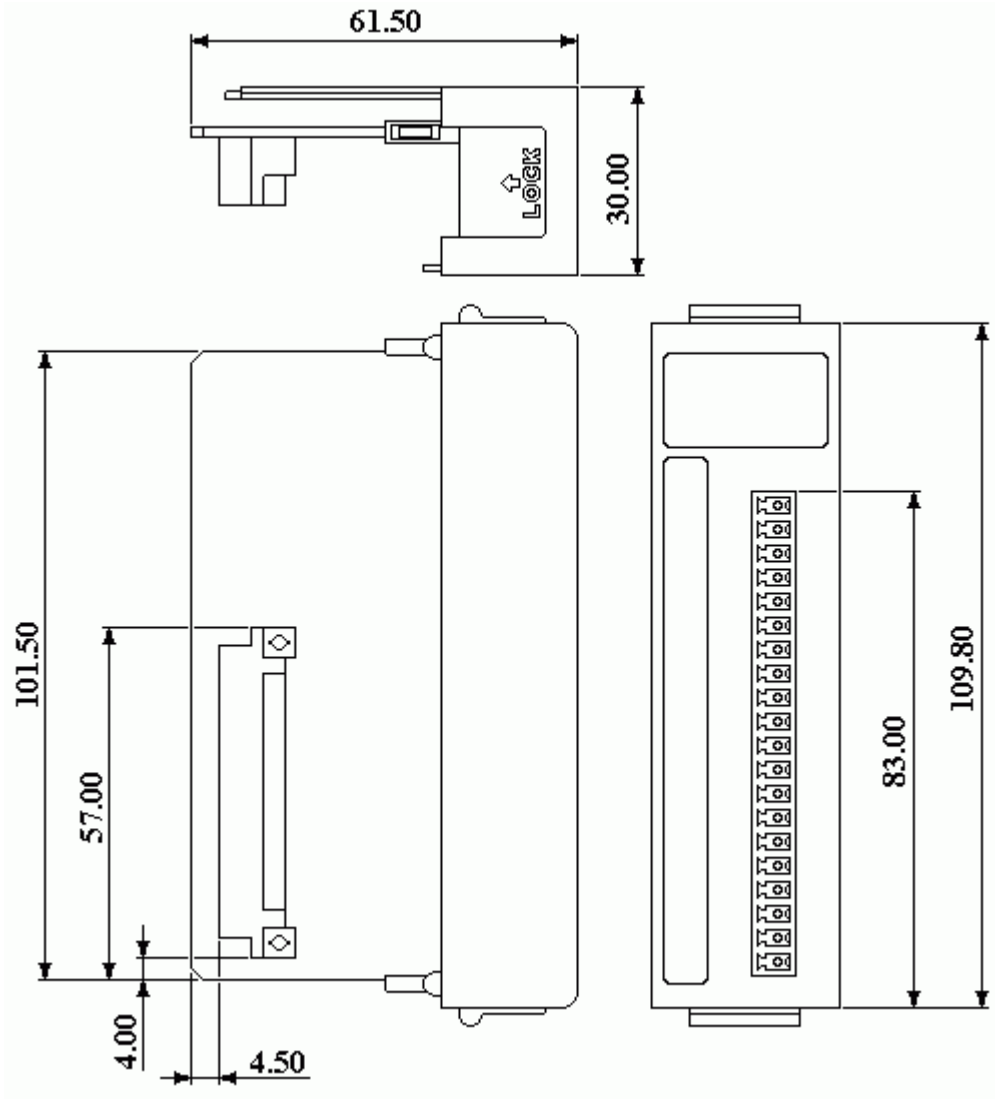
**I-8051 Internal I/O Structure**



**I-8051 Wire Connection**

Input Type	ON State LED <b>ON</b> Readback as <b>1</b>	OFF State LED <b>OFF</b> Readback as <b>0</b>
Relay Contact	Relay ON 	Relay Off 
TTL/CMOS Logic	Voltage < 1V Logic Level Low Logic GND 	Voltage > 3.5V Logic Level High Logic GND 
Open Collector	Open Collector On 	Open Collector Off 

**I-8051 Dimention**

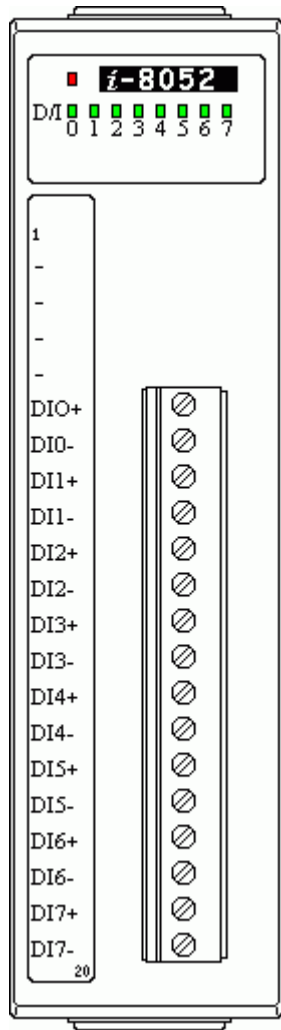


### I-8052 Specification

<b>Digital Input</b>	Input Channel	8
	Input Type	Isolated differential digital input
	ON State	Input voltage > 3.5V
	OFF State	Input voltage < 1V
	Input Impedance	3K Ohms
	Isolation Voltage	5000 Vrms

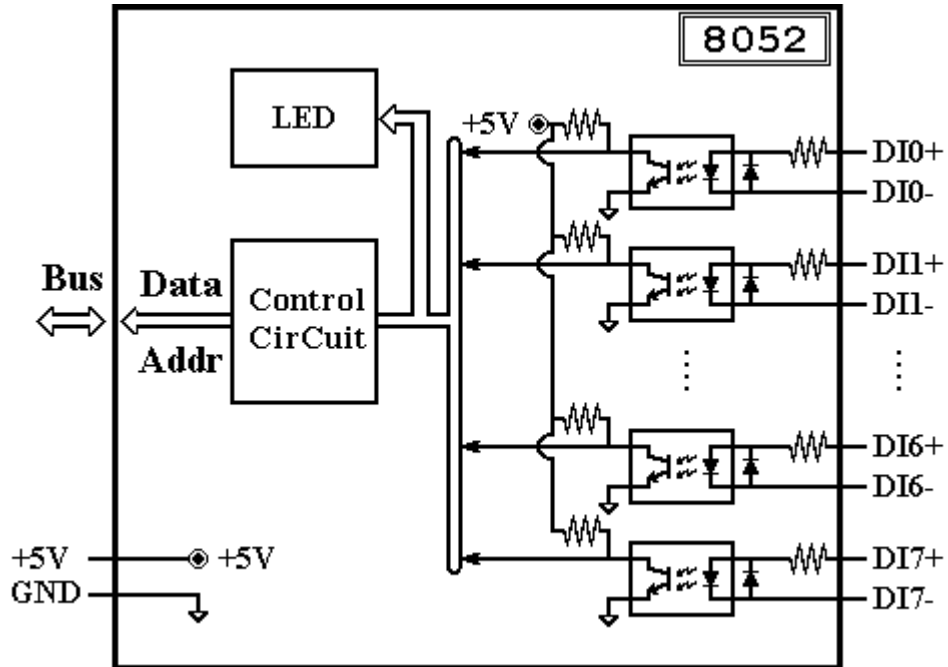
<b>LED Display</b>	1 LED as Power/Communication indicator 8 LEDs as digital input indicators
<b>Power Consumption</b>	Typical : 0.25W Maximum : 0.3W
<b>Note</b>	8052 : Internal Parallel Bus

### I-8052 Pin Assignment



Terminal Number	Pin Name
5	DI0+
6	DI0-
7	DI1+
8	DI1-
9	DI2+
10	DI2-
11	DI3+
12	DI3-
13	DI4+
14	DI4-
15	DI5+
16	DI5-
17	DI6+
18	DI6-
19	DI7+
20	DI7-

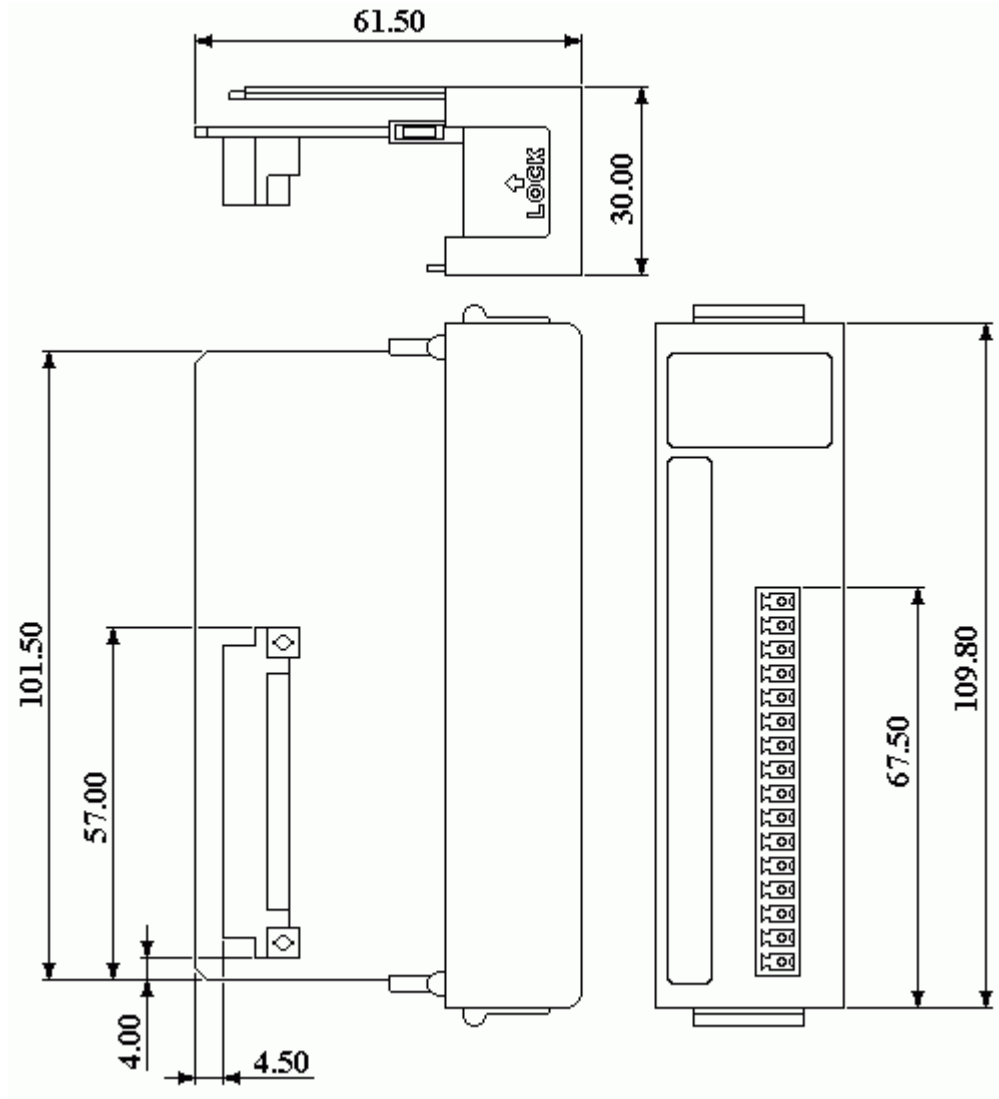
### I-8052 Internal I/O Structure



### I-8052 Wire Connection

Input Type	ON State LED ON Readback as <b>1</b>	OFF State LED OFF Readback as <b>0</b>
Relay Contact		
TTL/CMOS Logic		
Open Collector		

### I-8052 Dimention

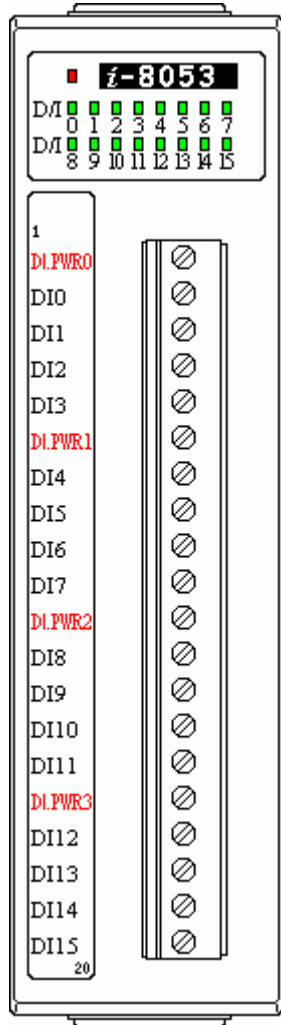


### I-8053 Specification

<b>Digital Input</b>	Input Channel	16
	Input Type	Isolated digital input with common power
	ON State	Input voltage < 1V
	OFF State	Input voltage > 3.5V
	Input Impedance	3K Ohms 0.25W
	Isolation Voltage	3750 Vrms
<b>LED Display</b>	1 LED as Power/Communication indicator	

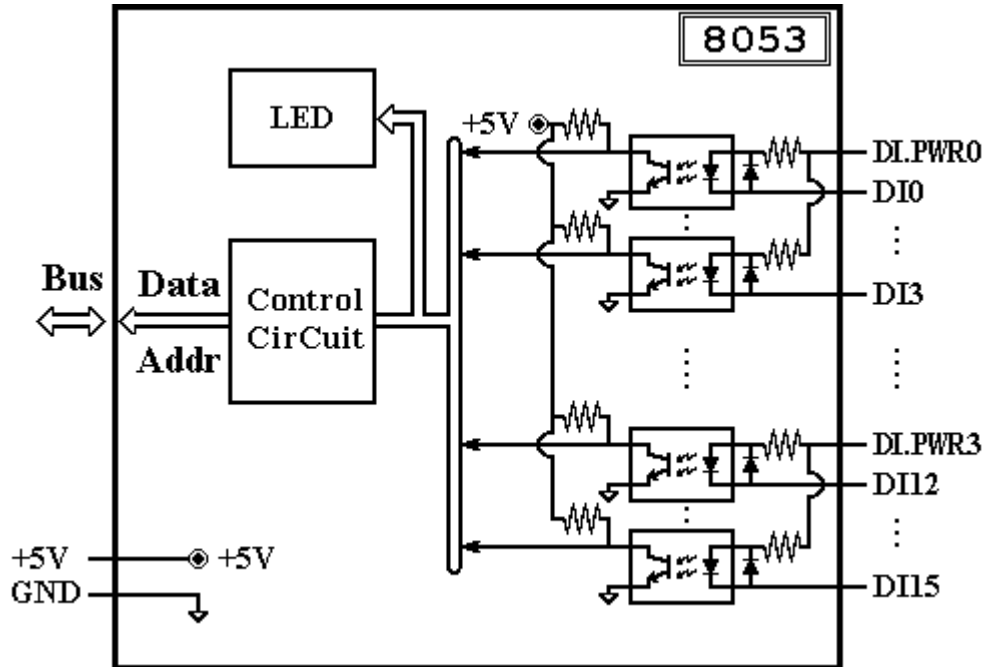
	16 LEDs as digital input indicators
<b>Power Consumption</b>	Typical : 0.5W Maximum : 0.8W
<b>Note</b>	8053 : Internal Parallel Bus

### I-8053 Pin Assignment



Terminal Number	Pin Name
1	DI.PWR0
2	DI0
3	DI1
4	DI2
5	DI3
6	DI.PWR1
7	DI4
8	DI5
9	DI6
10	DI7
11	DI.PWR2
12	DI8
13	DI9
14	DI10
15	DI11
16	DI.PWR3
17	DI12
18	DI13
19	DI14
20	DI15

### I-8053 Internal I/O Structure

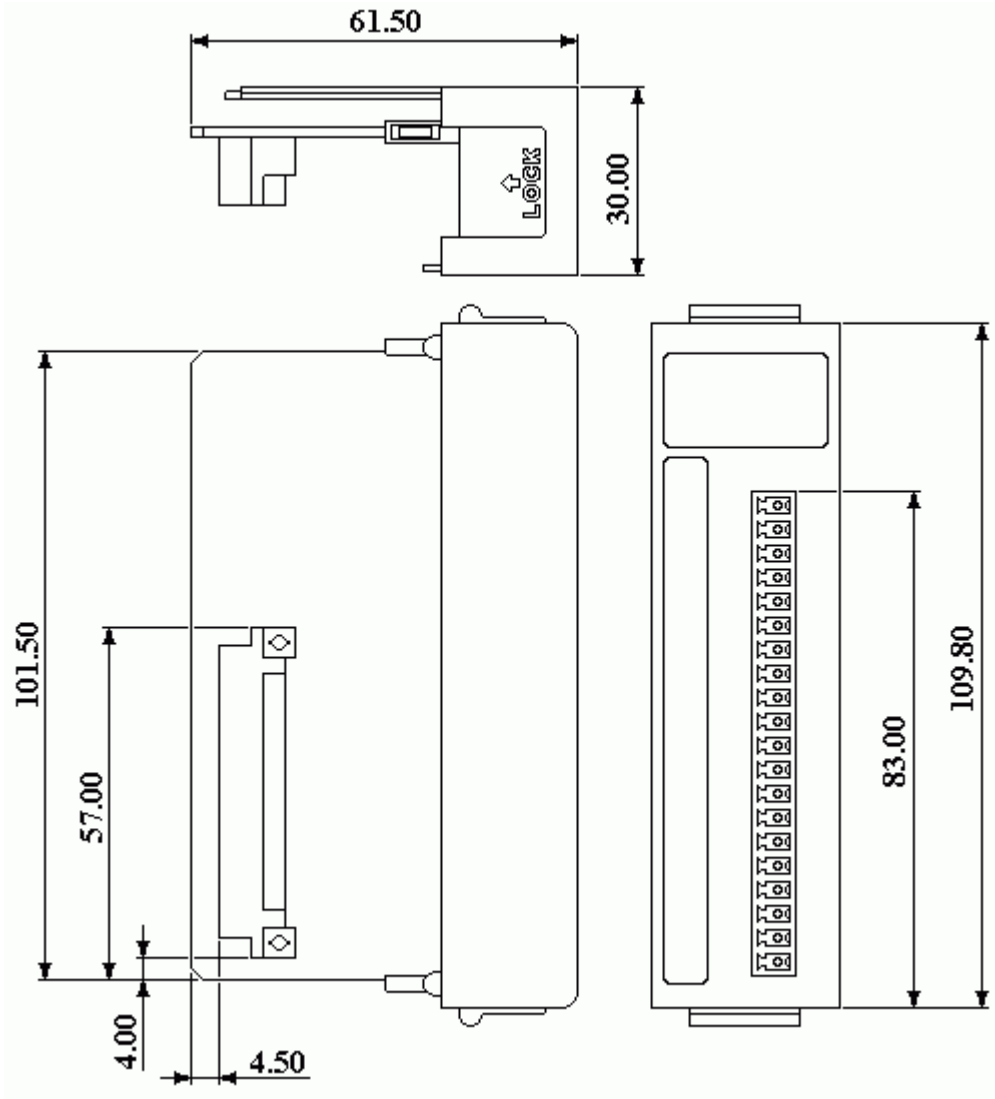


**I-8053 Wire Connection**

Input Type	ON State LED <b>ON</b> Readback as <b>1</b>	OFF State LED <b>OFF</b> Readback as <b>0</b>
Relay Contact		
TTL/CMOS Logic		
Open Collector		

**I-8053 Dimention**



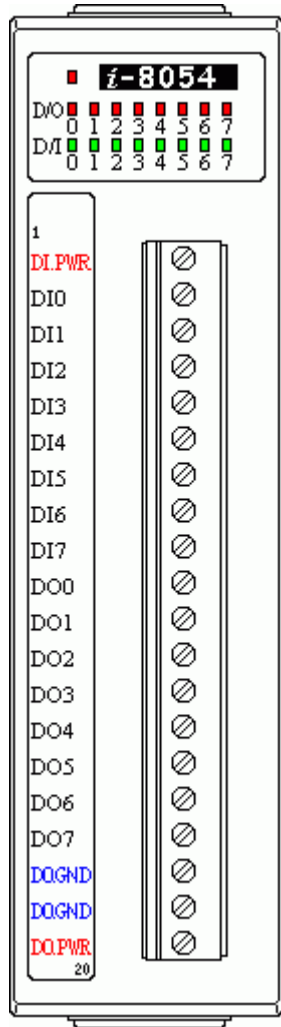


### I-8054 Specification

<b>Digital Output</b>	Output Channel	8
	Output Type	Isolated open-collector
	Max load current	375mA per channel
	Load voltage	+5V to +30VDC
	Isolation Voltage	3750 Vrms
<b>Digital Input</b>	Input Channel	8

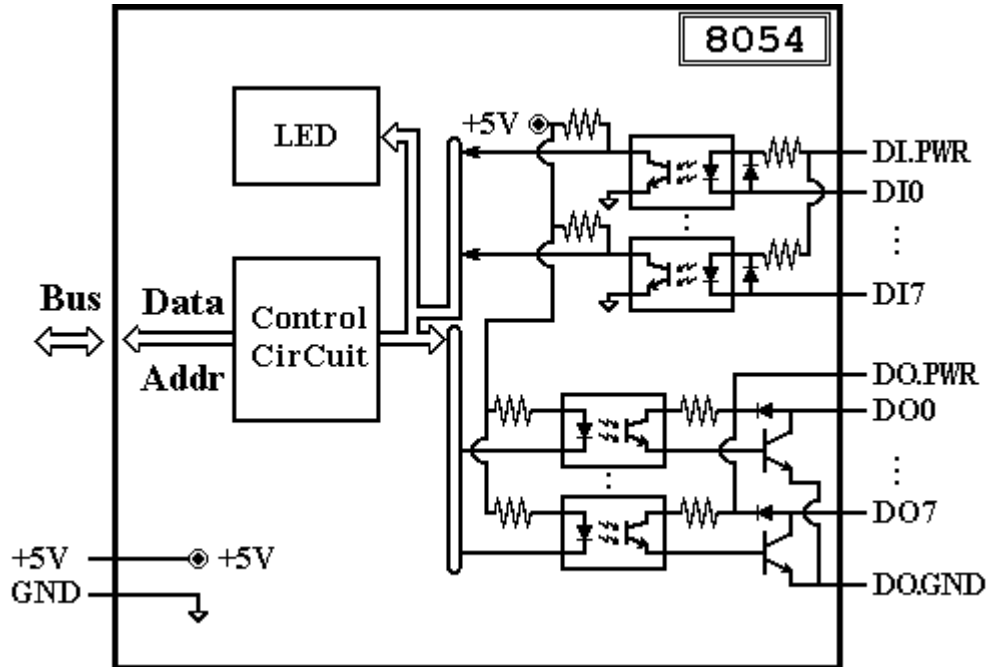
	Input Type	Isolated digital input with common power
	ON State	Input voltage < 1V
	OFF State	Input voltage > 3.5V
	Input Impedance	3K Ohms
	Isolation Voltage	3750 Vrms
<b>LED Display</b>	1 LED as Power/Communication indicator 8 LEDs as digital output indicators 8 LEDs as digital input indicators	
<b>Power Consumption</b>	Typical : 0.5W Maximum : 0.7W	
<b>Note</b>	8054 : Internal Parallel Bus	

### **I-8054 Pin Assignment**



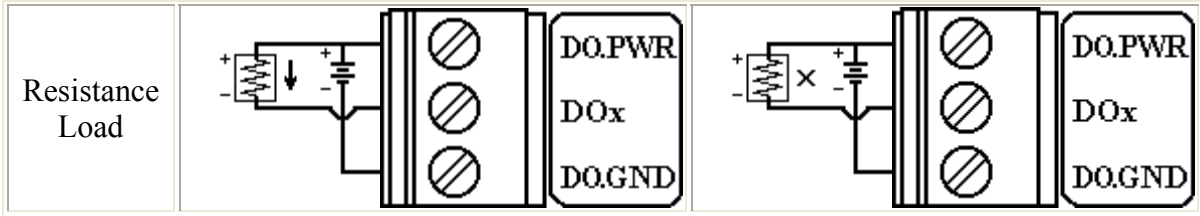
Terminal Number	Pin Name
1	DI.PWR
2	DI0
3	DI1
4	DI2
5	DI3
6	DI4
7	DI5
8	DI6
9	DI7
10	DO0
11	DO1
12	DO2
13	DO3
14	DO4
15	DO5
16	DO6
17	DO7
18	DO.GND
19	DO.GND
20	DO.PWR

### I-8054 Internal I/O Structure

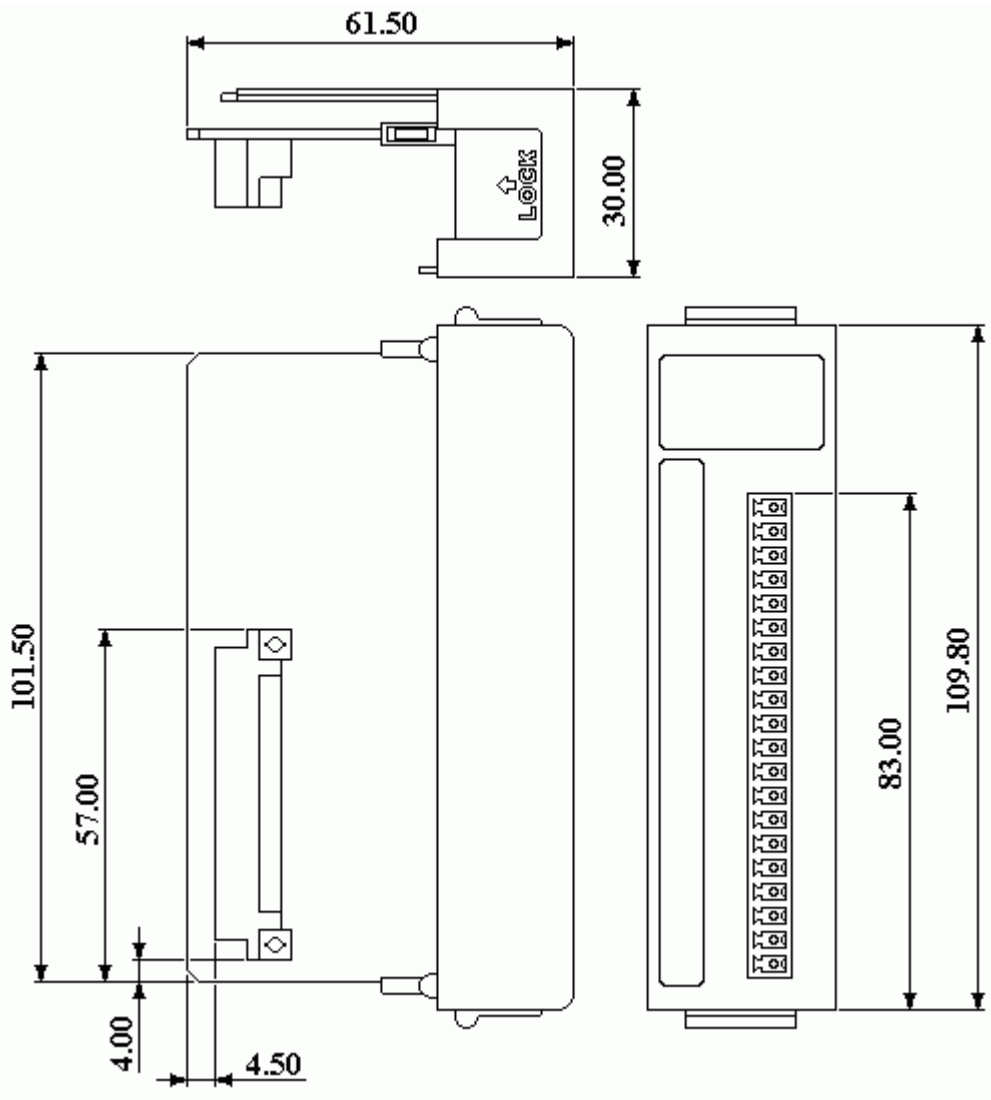


**I-8054 Wire Connection**

Input Type	ON State LED <b>ON</b> Readback as <b>1</b>	OFF State LED <b>OFF</b> Readback as <b>0</b>
Relay Contact		
TTL/CMOS Logic		
Open Collector		
Output Type	ON State LED <b>ON</b> Readback as <b>1</b>	OFF State LED <b>OFF</b> Readback as <b>0</b>
Drive Relay		



**I-8054 Dimention**

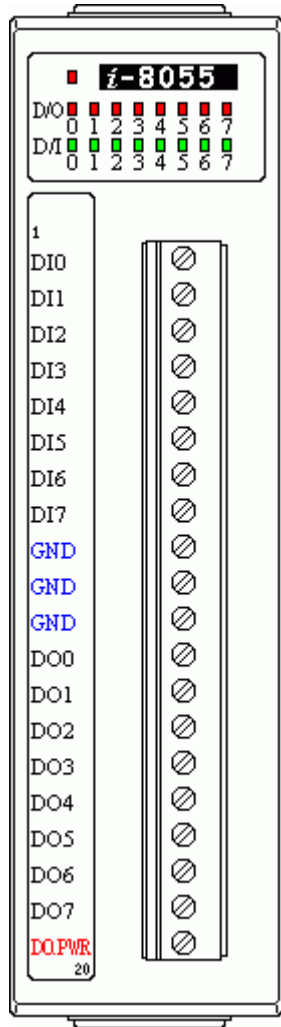


**I-8055 Specification**

<b>Digital Output</b>	Output Channel	8
	Output Type	Non-Isolated open-collector

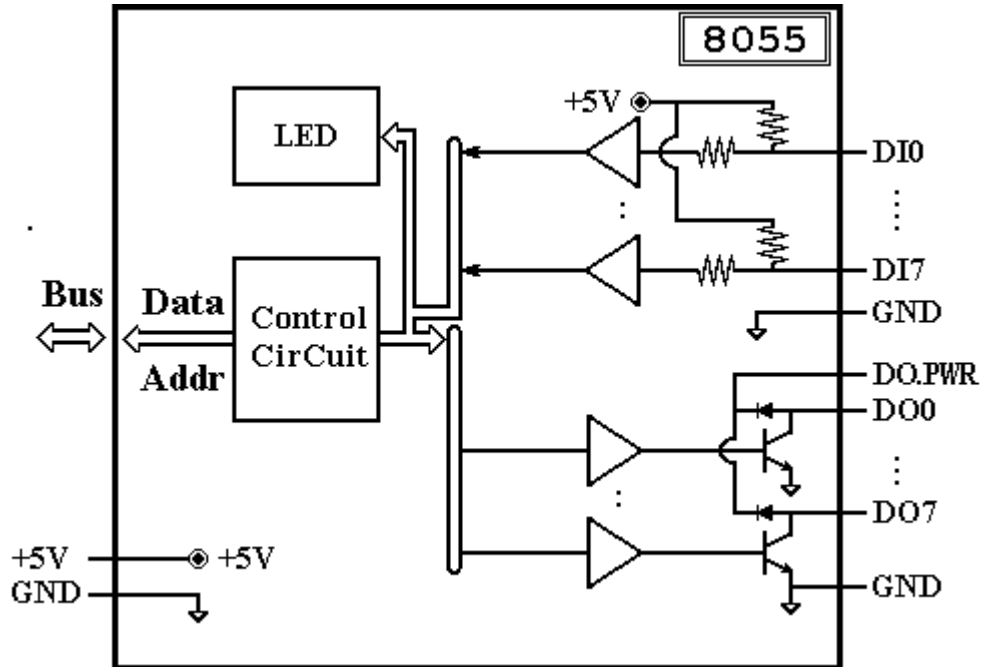
	Max load current	100mA per channel
	Load voltage	+5V to +30VDC
<b>Digital Input</b>	Input Channel	8
	Input Type	Non-Isolated digital input
	ON State	Input voltage < 1V
	OFF State	Input voltage > 3.5V
<b>LED Display</b>	1 LED as Power/Communication indicator 8 LEDs as digital output indicators 8 LEDs as digital input indicators	
<b>Power Consumption</b>	Typical : 0.3W Maximum : 0.5W	
<b>Note</b>	8055 : Internal Parallel Bus	

### **I-8055 Pin Assignment**



Terminal Number	Pin Name
1	DI0
2	DI1
3	DI2
4	DI3
5	DI4
6	DI5
7	DI6
8	DI7
9	GND
10	GND
11	GND
12	DO0
13	DO1
14	DO2
15	DO3
16	DO4
17	DO5
18	DO6
19	DO7
20	DO.PWR

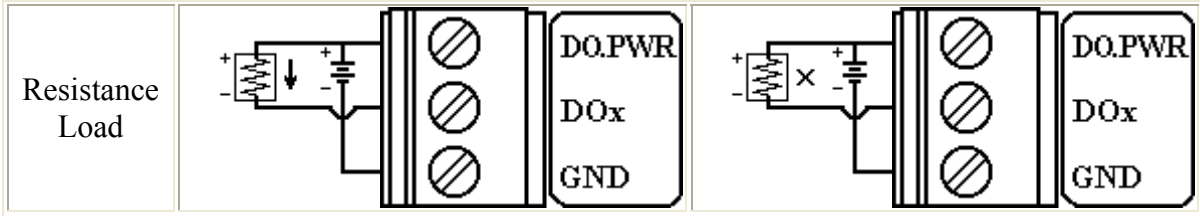
### I-8055 Internal I/O Structure



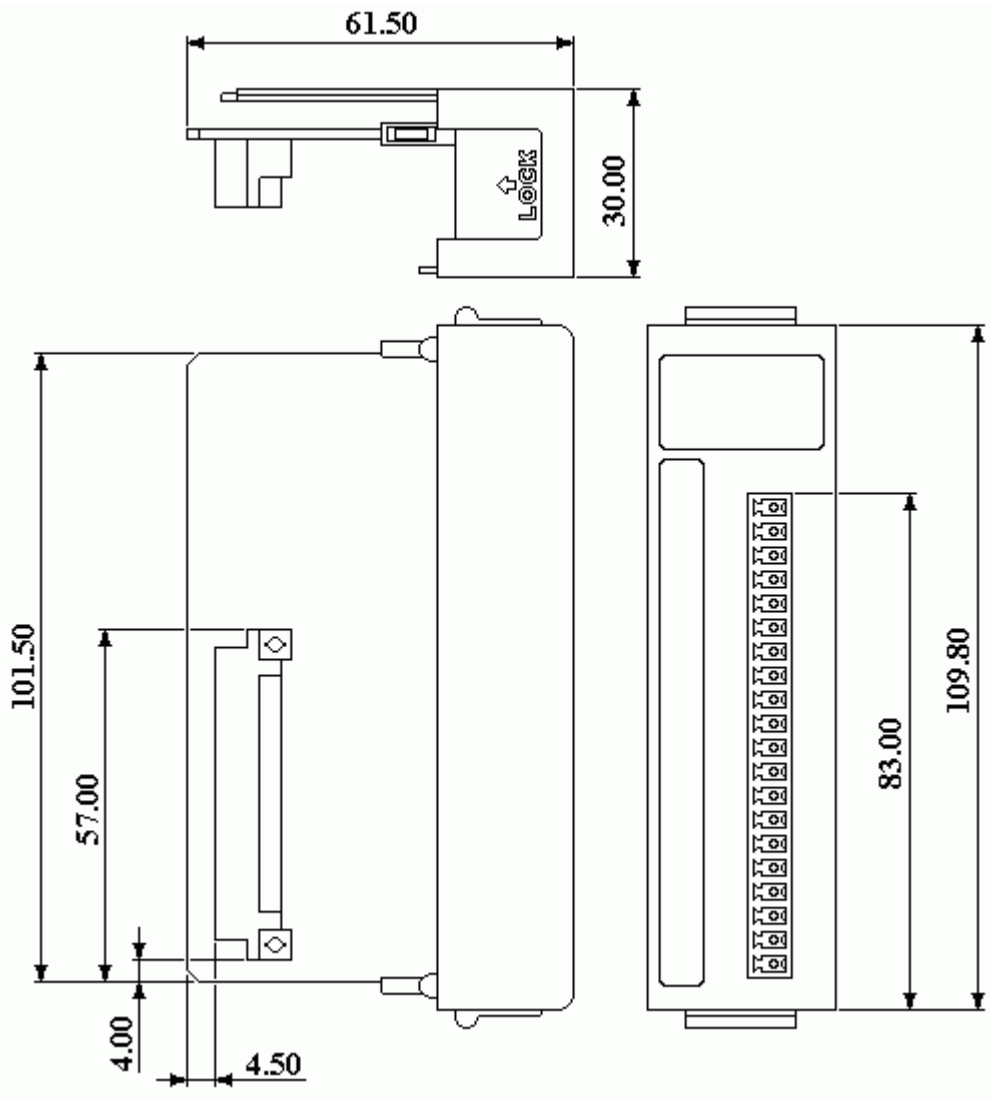
**I-8055 Wire Connection**

Input Type	ON State LED <b>ON</b> Readback as <b>1</b>	OFF State LED <b>OFF</b> Readback as <b>0</b>
Relay Contact		
TTL/CMOS Logic		
Open Collector		
Output Type	ON State LED <b>ON</b> Readback as <b>1</b>	OFF State LED <b>OFF</b> Readback as <b>0</b>
Drive Relay		





**I-8055 Dimention**

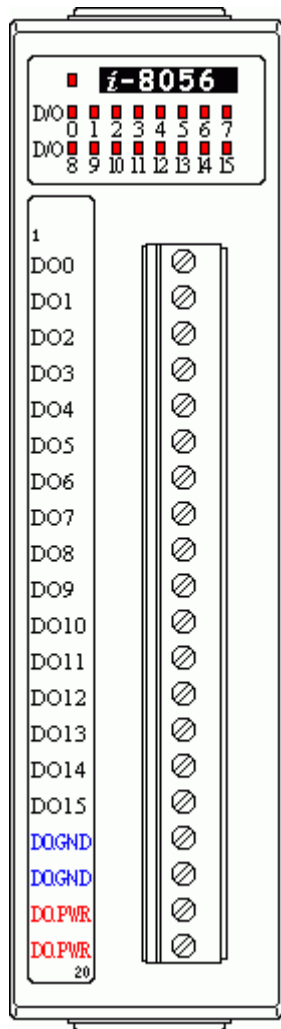


**I-8056 Specification**

<b>Digital Output</b>	Output Channel	16
	Output Type	Non-Isolated open-collector

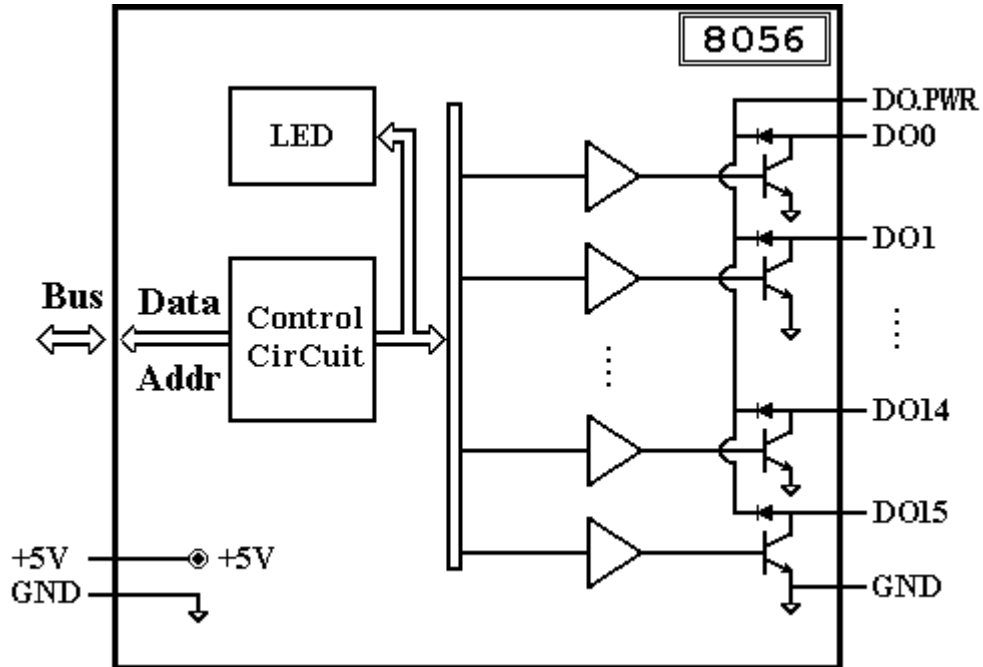
	Max load current	100mA per channel
	Load voltage	+5V to +30VDC
<b>LED Display</b>	1 LED as Power/Communication indicator 16 LEDs as digital output indicators	
<b>Power Consumption</b>	Typical : 0.3W Maximum : 0.6W	
<b>Note</b>	8056 : Internal Parallel Bus	

### I-8056 Pin Assignment



Terminal Number	Pin Name
1	DO0
2	DO1
3	DO2
4	DO3
5	DO4
6	DO5
7	DO6
8	DO7
9	DO8
10	DO9
11	DO10
12	DO11
13	DO12
14	DO13
15	DO14
16	DO15
17	DO.GND
18	DO.GND
19	DO.PWR
20	DO.PWR

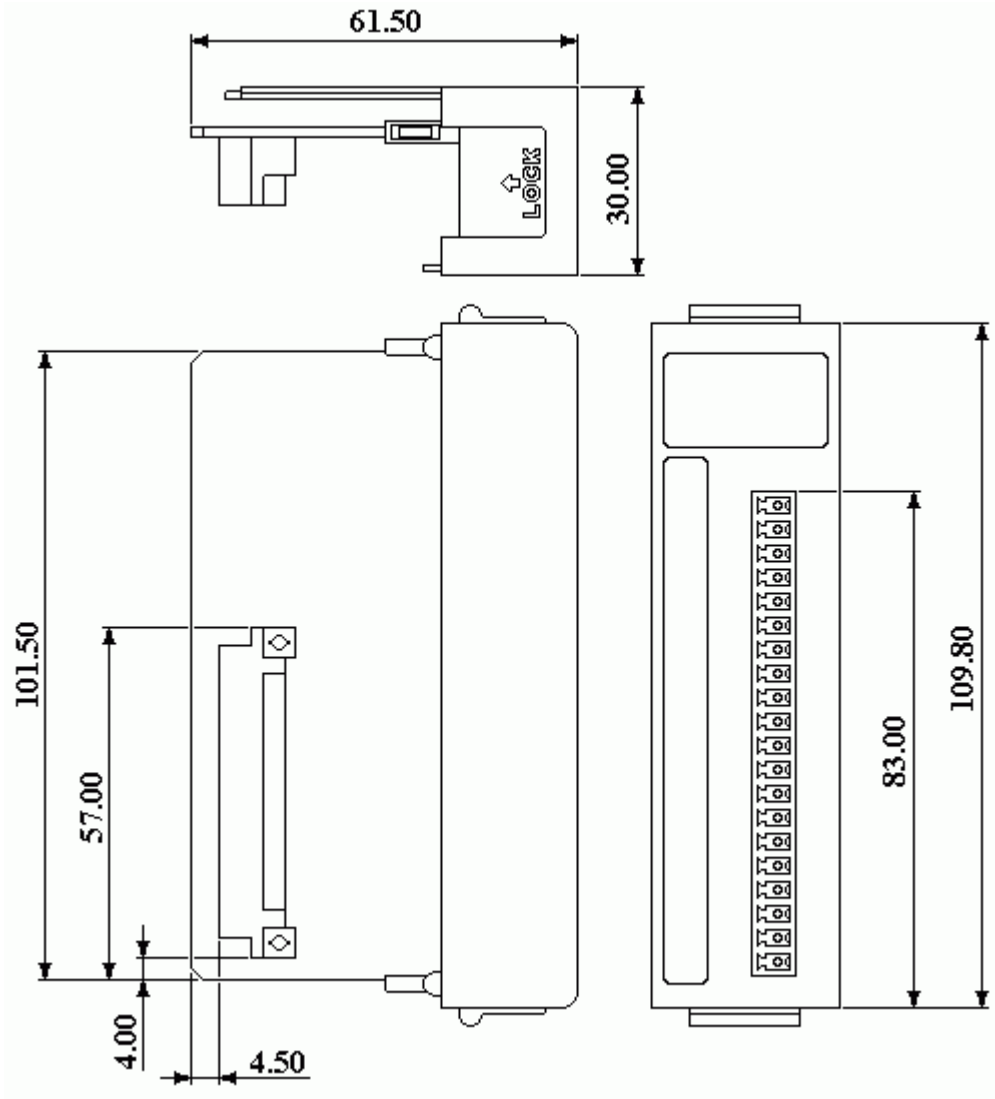
### I-8056 Internal I/O Structure



**I-8056 Wire Connection**

Output Type	ON State LED ON Readback as <b>1</b>	OFF State LED OFF Readback as <b>0</b>
Drive Relay		
Resistance Load		

**I-8056 Dimention**

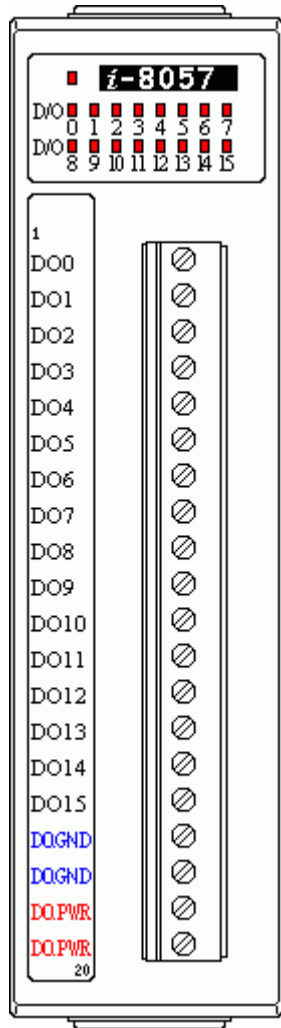


### I-8057 Specification

<b>Digital Output</b>	Output Channel	16
	Output Type	Isolated open-collector
	Max load current	100mA per channel
	Load voltage	+5V to +30VDC
	Isolation Voltage	3750 Vrms
<b>LED Display</b>	1 LED as Power/Communication indicator 16 LEDs as digital output indicators	

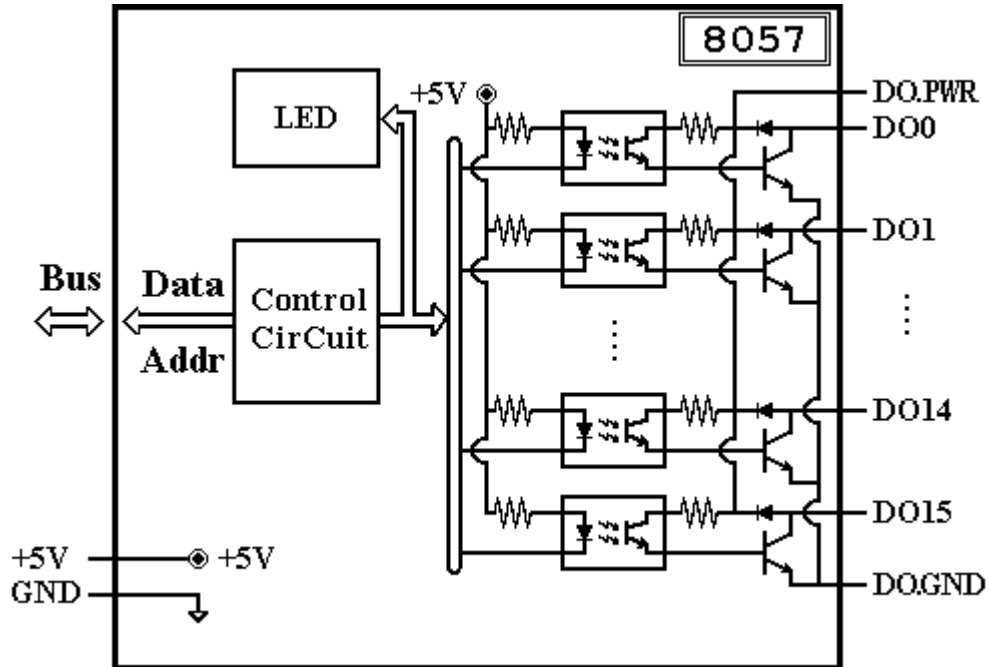
<b>Power Consumption</b>	Typical : 0.3W Maximum : 1.3W
<b>Note</b>	8057 : Internal Parallel Bus

### I-8057 Pin Assignment



Terminal Number	Pin Name
1	D00
2	D01
3	D02
4	D03
5	D04
6	D05
7	D06
8	D07
9	D08
10	D09
11	D010
12	D011
13	D012
14	D013
15	D014
16	D015
17	DO.GND
18	DO.GND
19	DO.PWR
20	DO.PWR

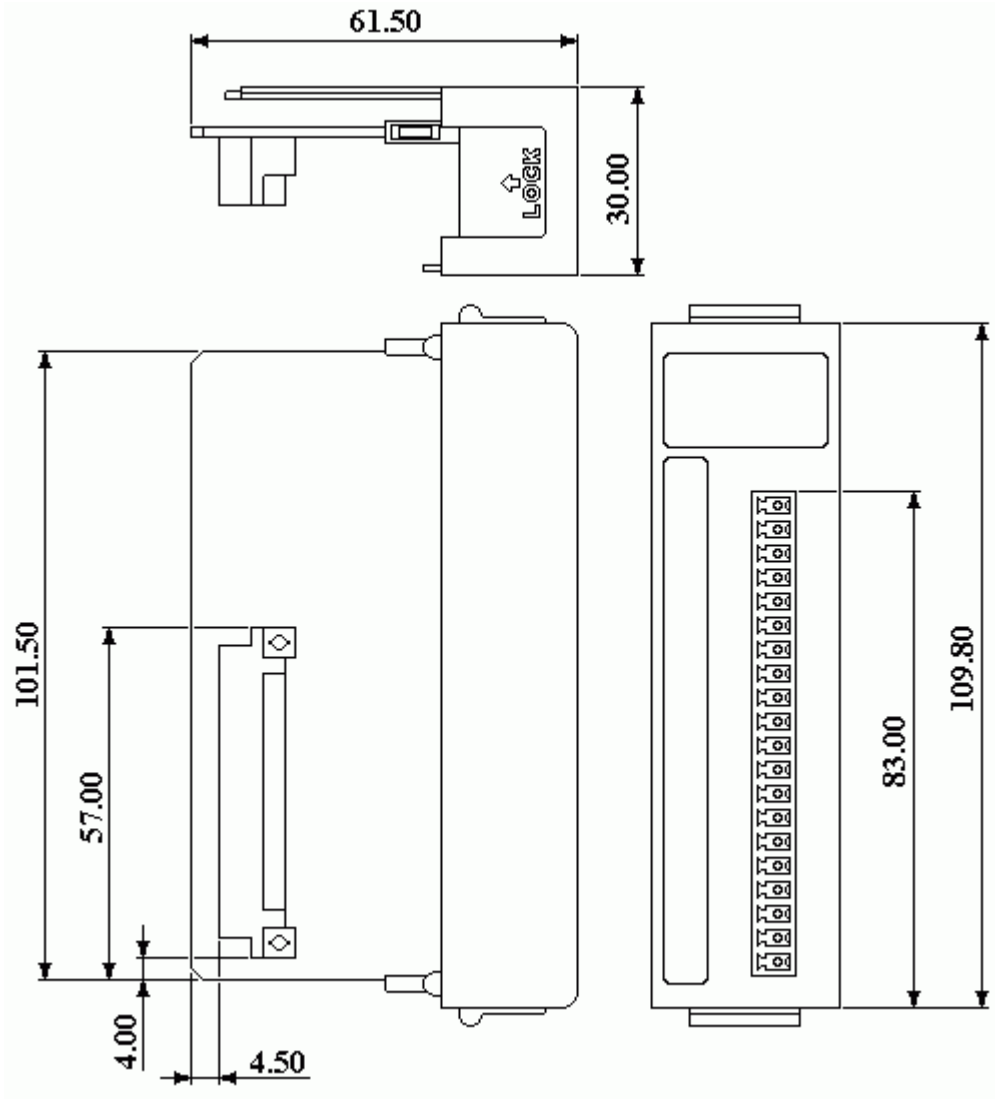
### I-8057 Internal I/O Structure



**I-8057 Wire Connection**

Output Type	ON State LED <b>ON</b> Readback as <b>1</b>	OFF State LED <b>OFF</b> Readback as <b>0</b>
Drive Relay		
Resistance Load		

**I-8057 Dimention**

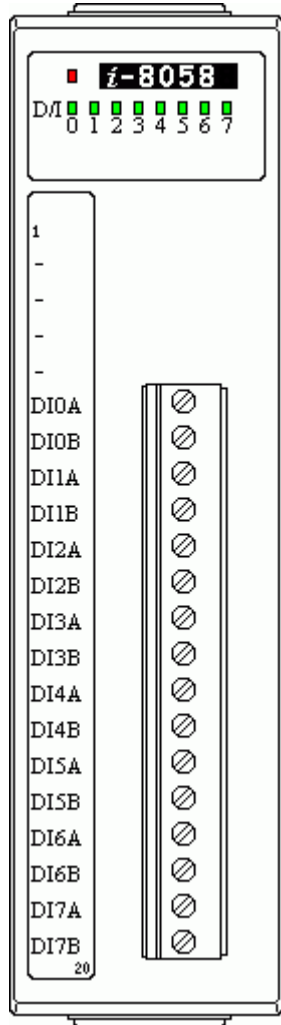


### I-8058 Specification

<b>Digital Input</b>	Input Channel	8 Channels
	Input Type	Isolated differential digital input
	ON State	Minimum 80VAC
	OFF State	Maximum 30VAC
	Peak Voltage	250VAC
	AC Frequency	Minimum 45Hz
	Input Impedance	68K Ohms

	Isolation Voltage	3750 Vrms
<b>LED Display</b>	1 LED as Power/Communication indicator 8 LEDs as digital input indicators	
Power Consumption	Maximum : 0.2W	

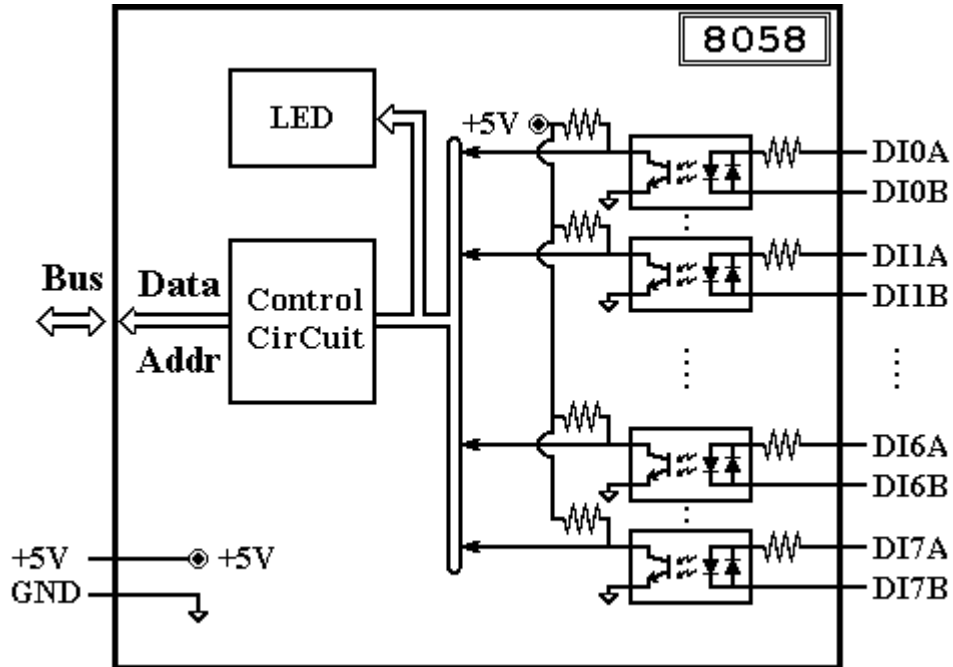
### I-8058 Pin Assignment



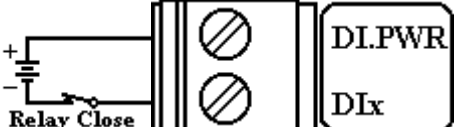

Terminal Number	Pin Name
5	DI0A
6	DI0B
7	DI1A
8	DI1B
9	DI2A
10	DI2B
11	DI3A
12	DI3B
13	DI4A
14	DI4B
15	DI5A
16	DI5B
17	DI6A
18	DI6B
19	DI7A
20	DI7B

### I-8058 Internal I/O Structure

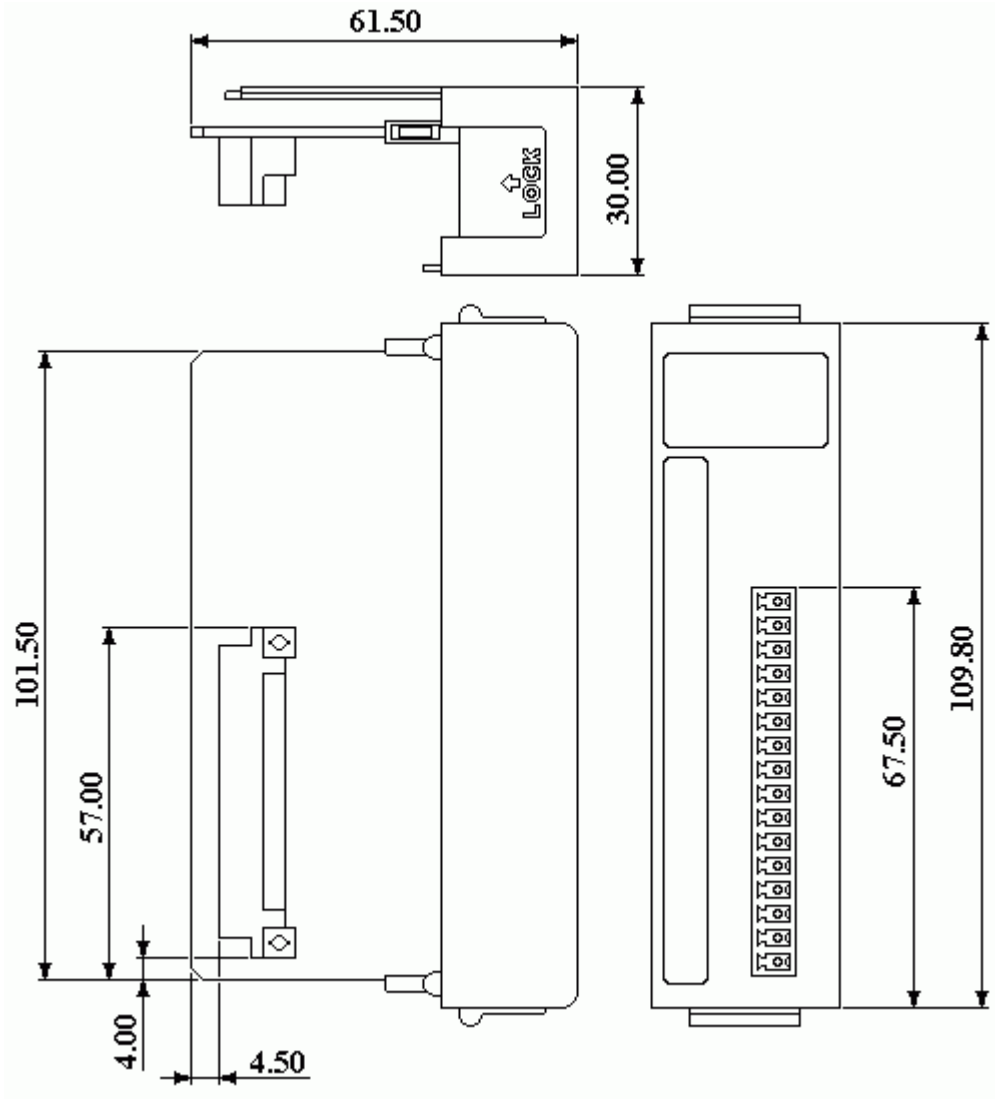




**I-8058 Wire Connection**

Input Type	ON State LED <b>ON</b> Readback as <b>1</b>	OFF State LED <b>OFF</b> Readback as <b>0</b>
Relay Contact		

**I-8058 Dimention**

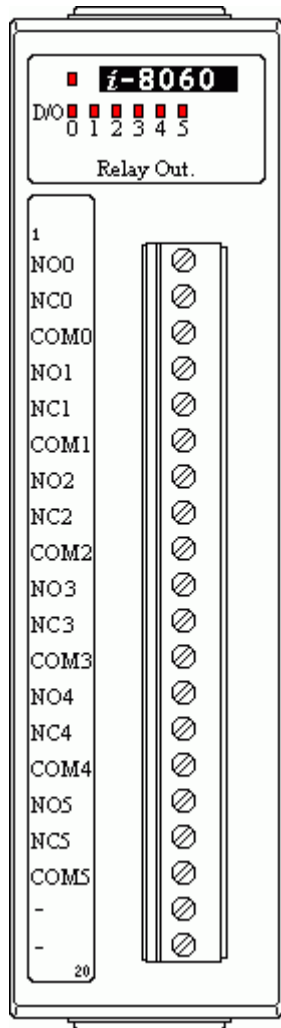


### I-8060 Specification

<b>Relay Output</b>	Output Channel	6
	Relay Type	Form C : Relay 0 to 5
	Contact Rating	0.6A@125VAC 0.6A@110VDC 2A@30VDC
	Operate/Release Time	7mS/3mS
	Life	2*10 <sup>5</sup>
	Dielectric Strength	Coil to contacts : 1500VAC

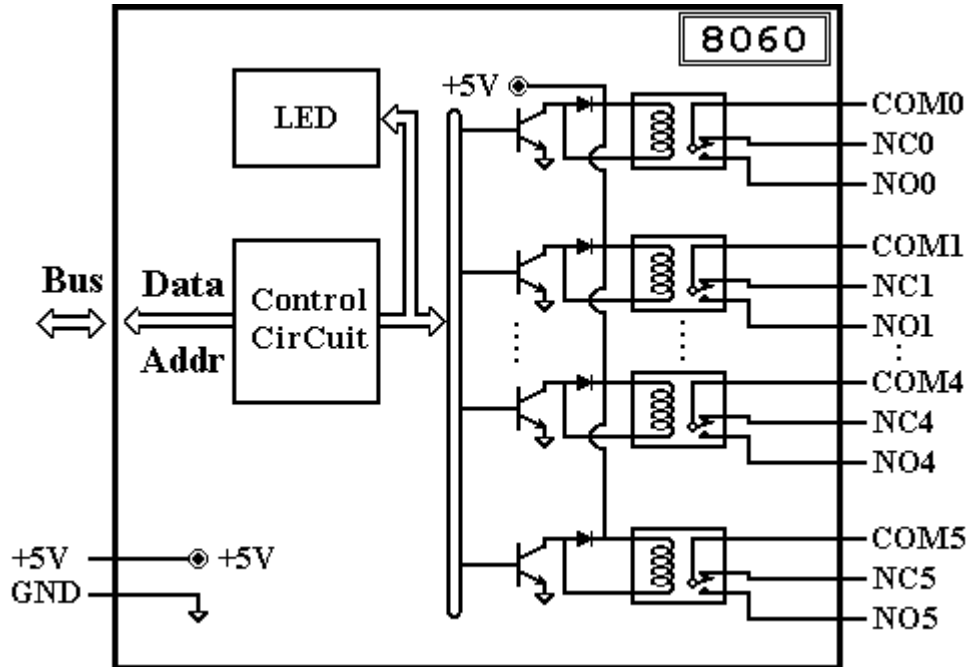
	Open contacts : 1000VAC
<b>LED Display</b>	1 LED as Power/Communication indicator 6 LEDs as relay output indicators
<b>Power Consumption</b>	Typical : 0.5W Maximum : 1.5W
<b>Note</b>	8060 : Internal Parallel Bus

### I-8060 Pin Assignment



Terminal Number	Pin Name
1	NO0
2	NC0
3	COM0
4	NO1
5	NC1
6	COM1
7	NO2
8	NC2
9	COM2
10	NO3
11	NC3
12	COM3
13	NO4
14	NC4
15	COM4
16	NO5
17	NC5
18	COM5
19	-
20	-

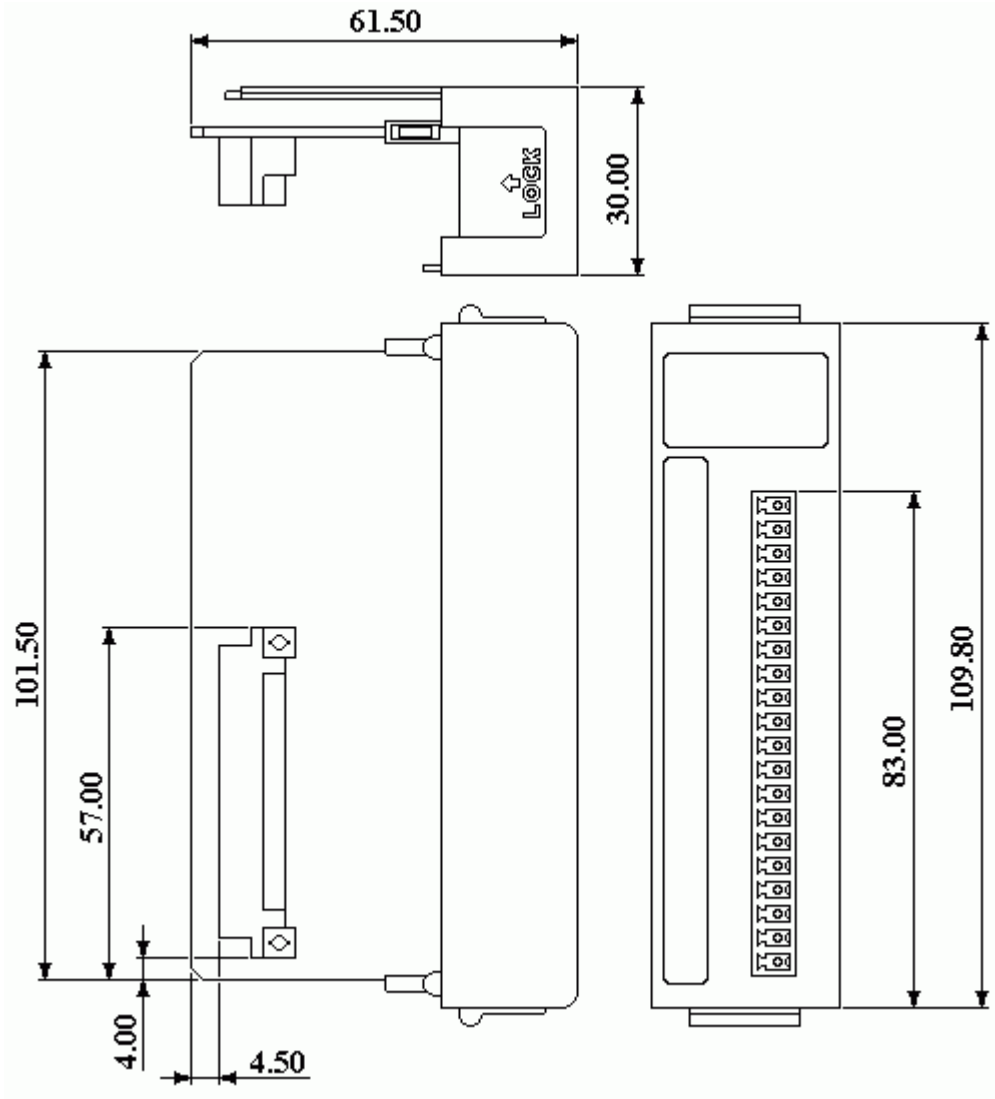
### I-8060 Internal I/O Structure



### I-8060 Wire Connection

Output Type	ON State LED <b>ON</b> Readback as <b>1</b>	OFF State LED <b>OFF</b> Readback as <b>0</b>
Form C Relay Contact		

### I-8060 Dimention

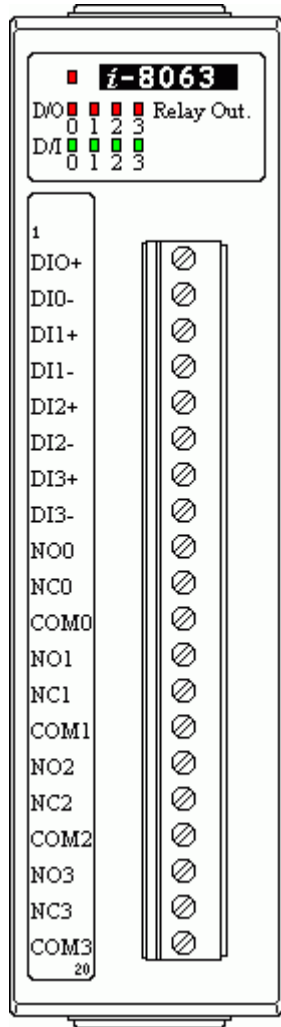


### I-8063 Specification

<b>Digital Input</b>	Input Channel	4
	Input Type	Isolated differential digital input
	ON State	Input voltage > 3.5V
	OFF State	Input voltage < 1V
	Input Impedance	3K Ohms
	Isolation Voltage	5000 Vrms
<b>Relay Output</b>	Output Channel	4

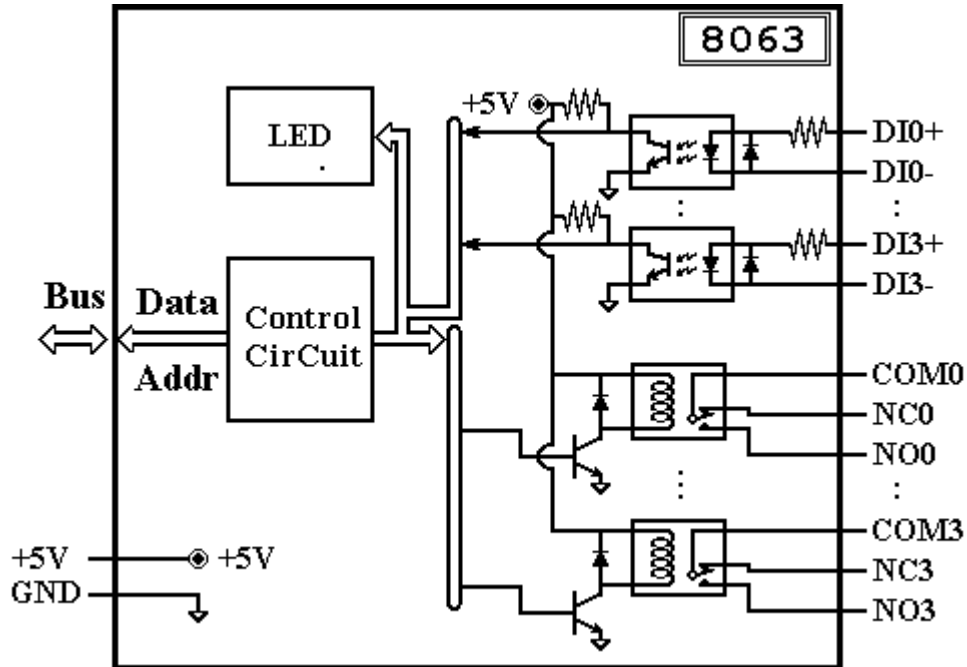
	Relay Type	Form C
	Contact Rating	0.6A@125VAC 2A@30VDC
	Operate/Release Time	3mS/2mS
	Life	5*10 <sup>5</sup>
	Surage Strength	500V
<b>LED Display</b>	1 LED as Power/Communication indicator 4 LEDs as digital input indicators 4 LEDs as relay output indicators	
<b>Power Consumption</b>	Typical : 0.5W Maximum : 1.2W	
<b>Note</b>	8063 : Internal Parallel Bus	

### **I-8063 Pin Assignment**



Terminal Number	Pin Name
1	DI0+
2	DI0-
3	DI1+
4	DI1-
5	DI2+
6	DI2-
7	DI3+
8	DI3-
9	NO0
10	NC0
11	COM0
12	NO1
13	NC1
14	COM1
15	NO2
16	NC2
17	COM2
18	NO3
19	NC3
20	COM3

### I-8063 Internal I/O Structure

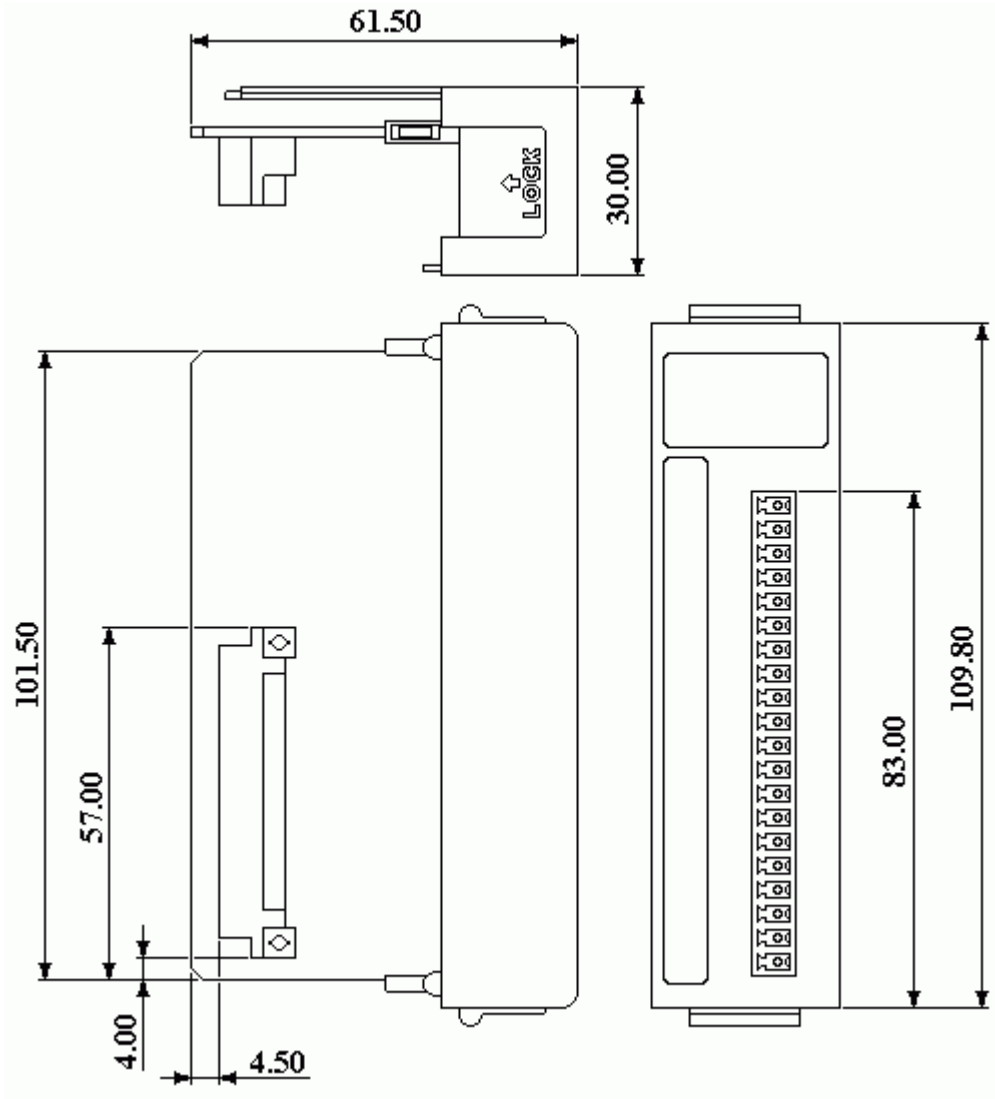


### I-8063/8063 Wire Connection

Input Type	ON State LED <b>ON</b> Readback as <b>1</b>	OFF State LED <b>OFF</b> Readback as <b>0</b>
Relay Contact		
TTL/CMOS Logic		
Open Collector		

### I-8063 Dimention



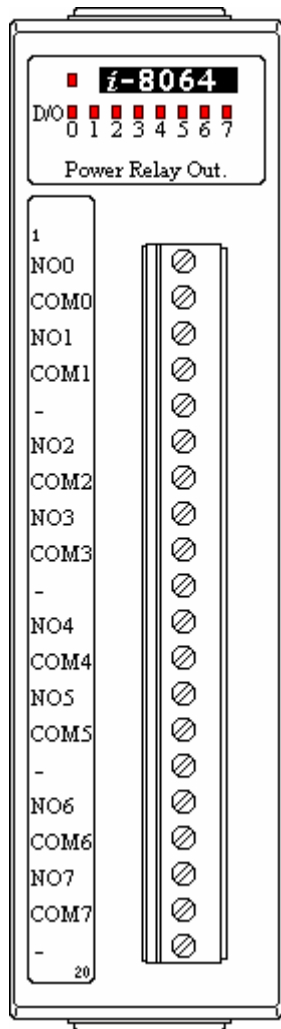


### I-8064 Specification

<b>Relay Output</b>	Output Channel	8
	Contact Type	Form A : normal open (N.O.) contact
	Contact Rating	5A@250VAC or 5A@30VDC
	Operate/Release Time	6mS/3mS max.
	Life	Mechanical : $2 \times 10^7$ min. Electrical : $10^5$ min. (Contact Rating)
	Dielectric Strength	between open contacts : 750VAC

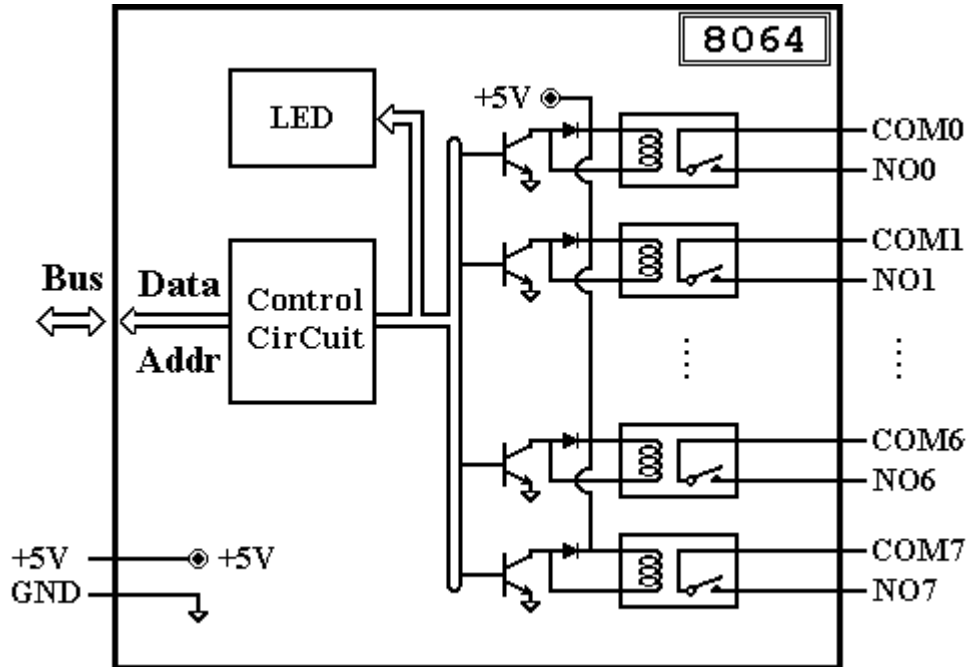
		between coil and contacts : 2000VAC
	Surge Strength	4000V
<b>LED Display</b>	1 LED as Power/Communication indicator 8 LEDs as relay output indicators	
<b>Power Consumption</b>	Typical : 0.5W Maximum : 1.7W	
<b>Note</b>	8064 : Internal Parallel Bus	

### I-8064 Pin Assignment



Terminal Number	Pin Name
1	NO0
2	COM0
3	NO1
4	COM1
5	-
6	NO2
7	COM2
8	NO3
9	COM3
10	-
11	NO4
12	COM4
13	NO5
14	COM5
15	-
16	NO6
17	COM6
18	NO7
19	COM7
20	-

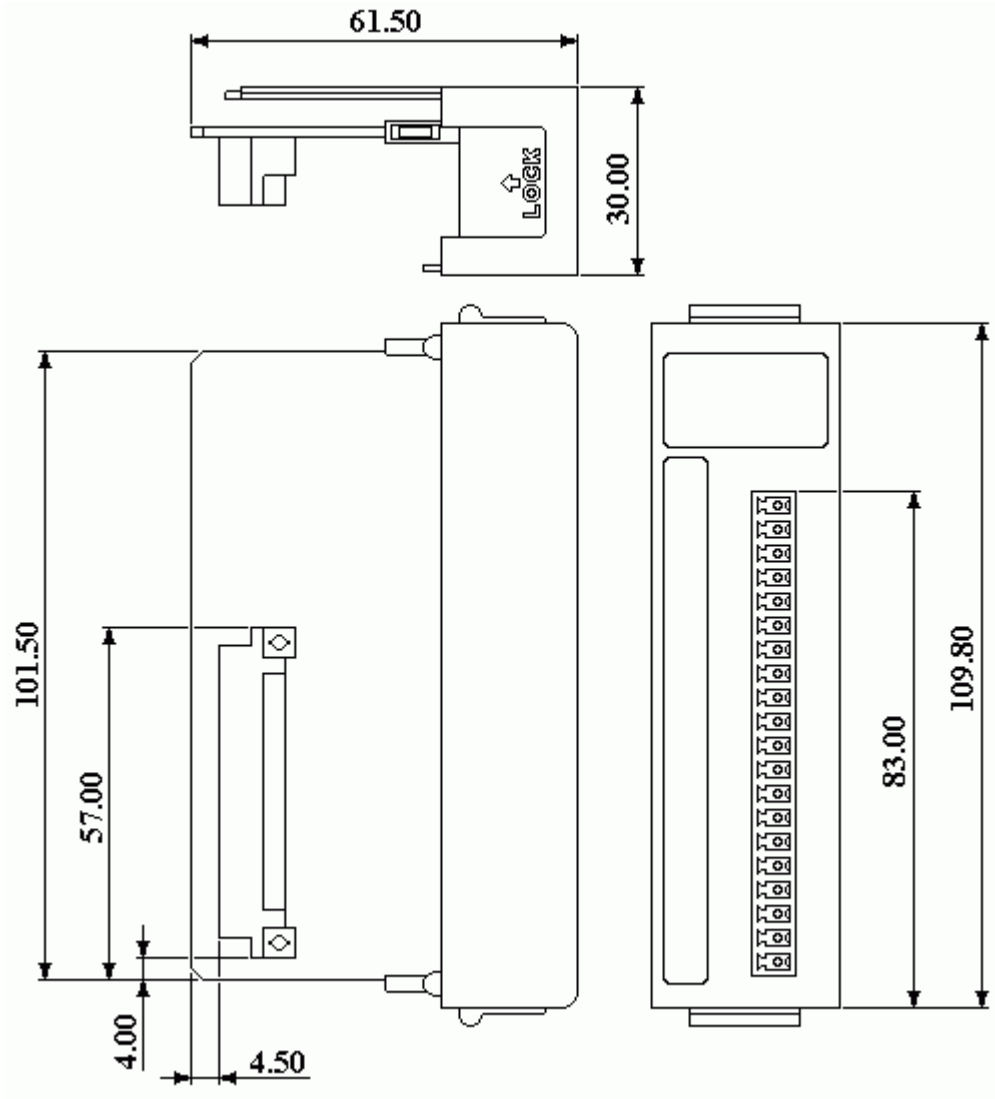
### I-8064 Internal I/O Structure



**I-8064 Wire Connection**

Output Type	ON State LED <b>ON</b> Readback as <b>1</b>	OFF State LED <b>OFF</b> Readback as <b>0</b>
Relay Contact		

**I-8064 Dimention**

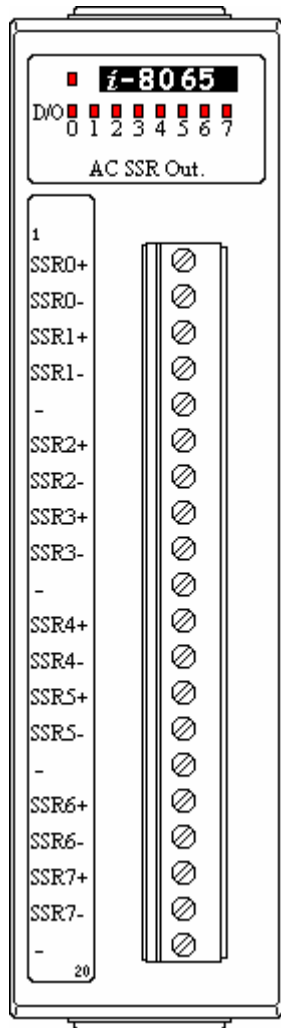


### I-8065 Specification

<b>AC-SSR Output</b>	Output Channel	8
	AC-SSR Type	Normal Open
	Load Voltage Rating	24 to 265 V <sub>RMS</sub>
	Off-state Leakage Current	1.5mA <sub>RMS</sub> (@ 200V <sub>RMS</sub> 60Hz) max.
	Load Current	1.0A <sub>RMS</sub> max.
	Operate Time	1mS max.
	Release Time	1/2 cycle + 1mS max.

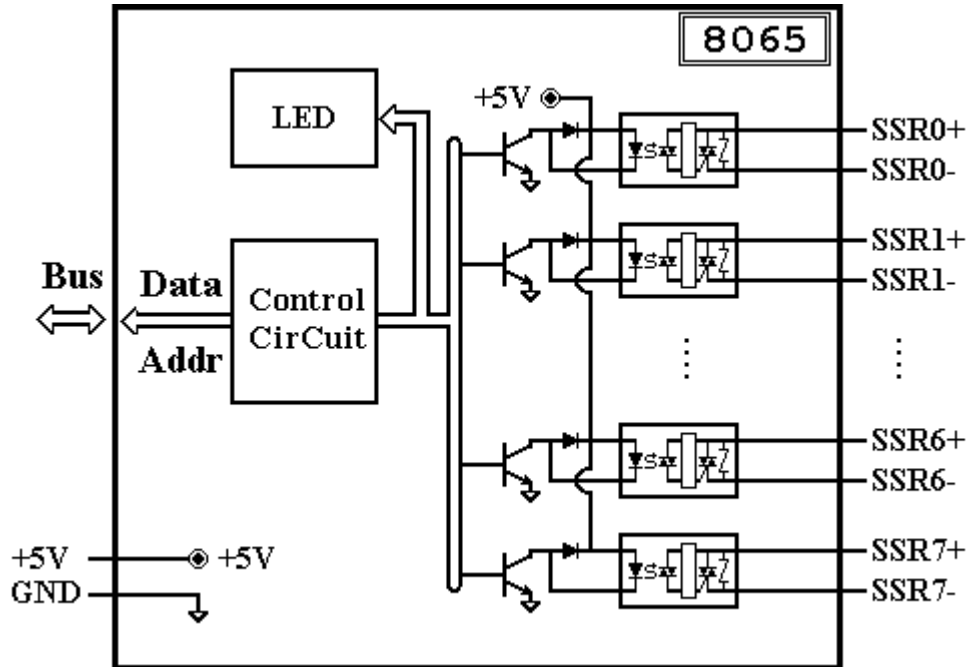
	Dielectric Strength	2500V <sub>RMS</sub>
<b>LED Display</b>	1 LED as Power/Communication indicator 8 LEDs as AC-SSR output indicators	
<b>Power Consumption</b>	Typical : 0.5W Maximum : 0.7W	
<b>Note</b>	8065 : Internal Parallel Bus	

### I-8065 Pin Assignment



Terminal Number	Pin Name
1	SSR0+
2	SSR0-
3	SSR1+
4	SSR1-
5	-
6	SSR2+
7	SSR2-
8	SSR3+
9	SSR3-
10	-
11	SSR4+
12	SSR4-
13	SSR5+
14	SSR5-
15	-
16	SSR6+
17	SSR6-
18	SSR7+
19	SSR7-
20	-

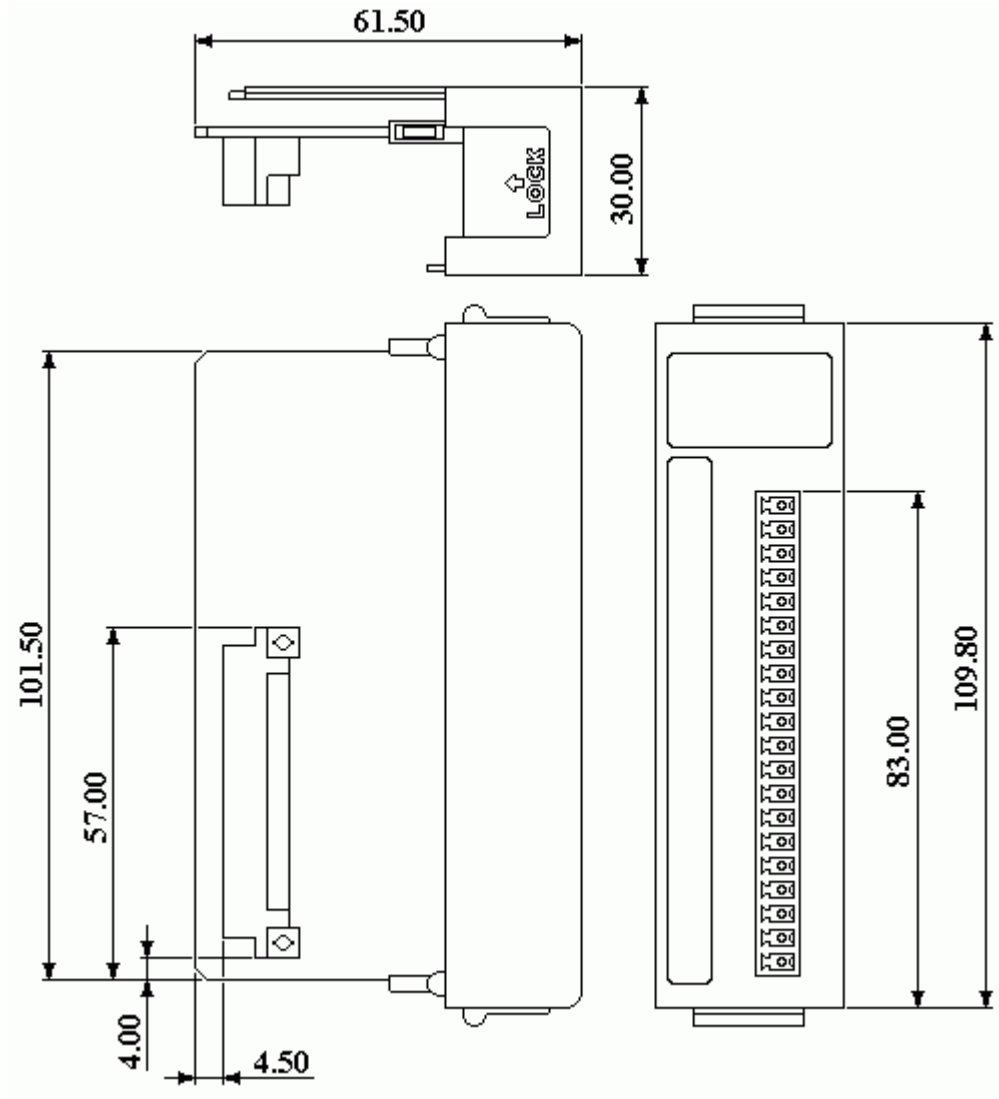
### I-8065 Internal I/O Structure



**I-8065 Wire Connection**

Output Type	ON State LED <b>ON</b> Readback as <b>1</b>	OFF State LED <b>OFF</b> Readback as <b>0</b>
AC-SSR Output		

**I-8065 Dimention**

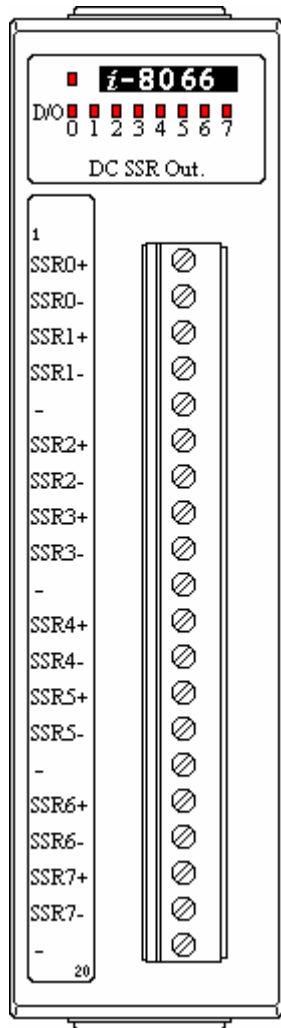


### I-8066 Specification

<b>DC-SSR Output</b>	Output Channel	8
	DC-SSR Type	Normal Open
	Load Voltage Rating	3 to 30 V <sub>DC</sub>
	Off-state Leakage Current	0.1mA (at 30V <sub>DC</sub> ) max.
	Load Current	1.0A max.
	Operate Time	1mS max.
	Release Time	1mS max.

	Dielectric Strength	2500V <sub>RMS</sub>
<b>LED Display</b>	1 LED as Power/Communication indicator 8 LEDs as DC-SSR output indicators	
<b>Power Consumption</b>	Typical : 0.5W Maximum : 0.7W	
<b>Note</b>	8066 : Internal Parallel Bus	

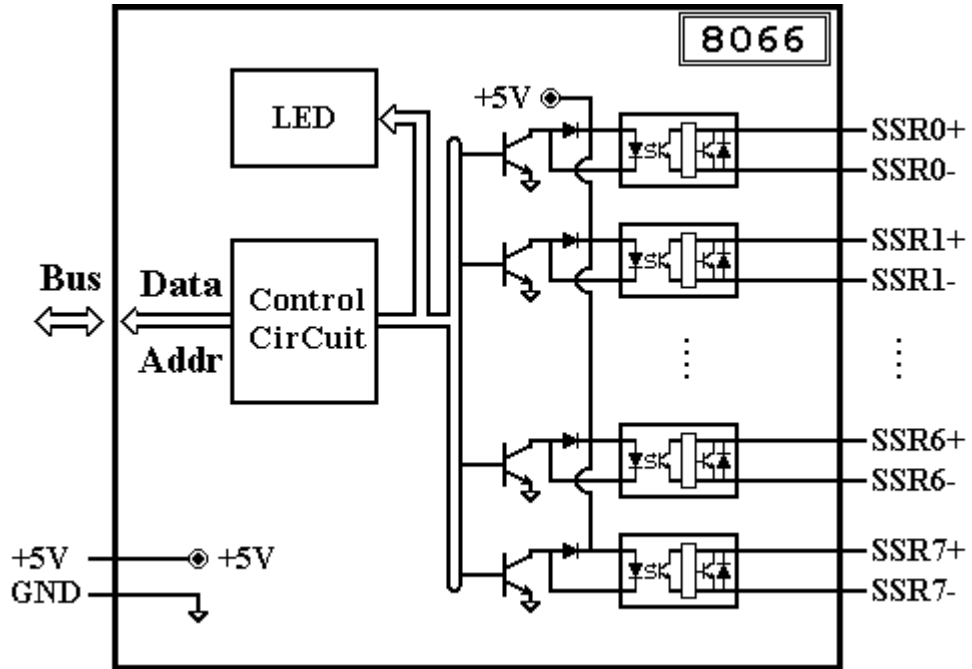
### I-8066 Pin Assignment



Terminal Number	Pin Name
1	SSR0+
2	SSR0-
3	SSR1+
4	SSR1-
5	-
6	SSR2+
7	SSR2-
8	SSR3+
9	SSR3-
10	-
11	SSR4+
12	SSR4-
13	SSR5+
14	SSR5-
15	-
16	SSR6+
17	SSR6-
18	SSR7+
19	SSR7-
20	-

### I-8066 Internal I/O Structure

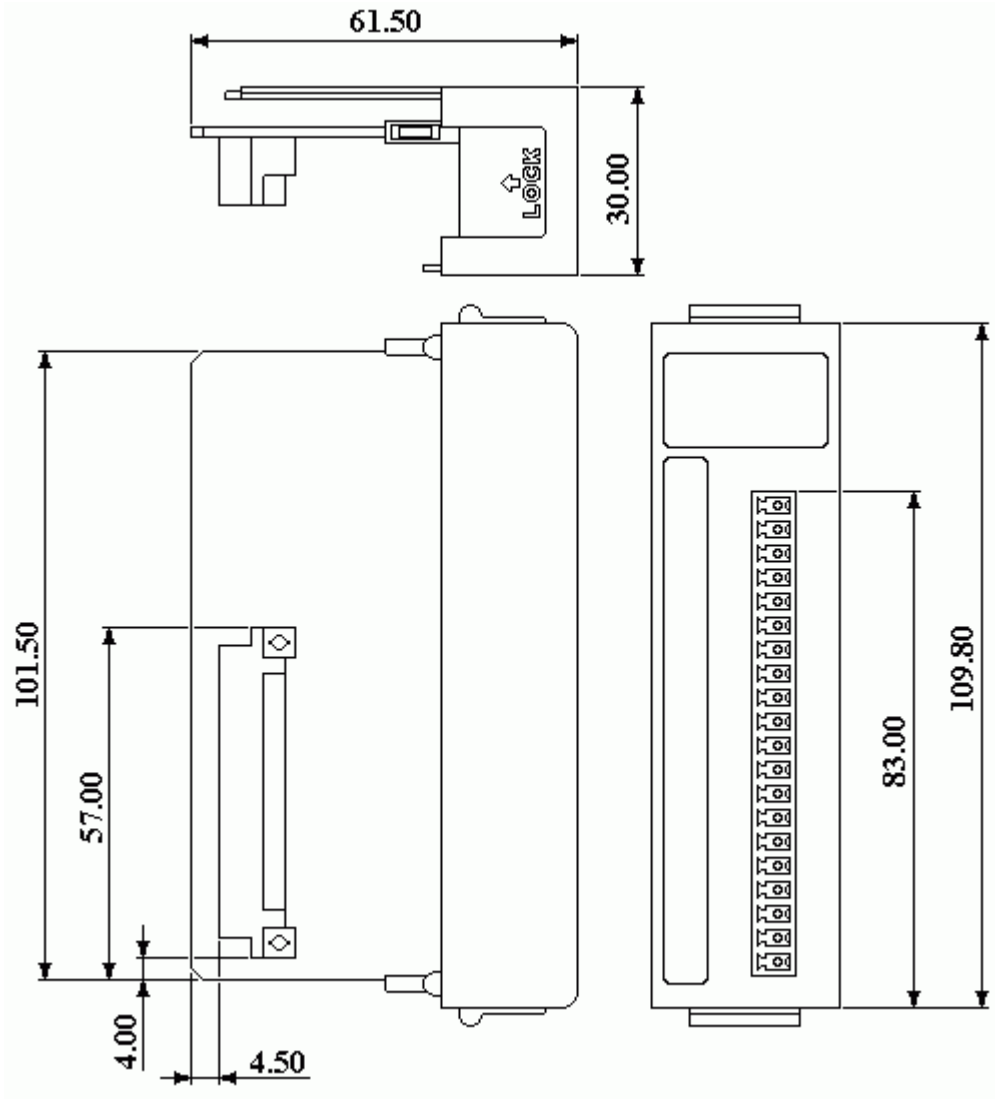




### I-8066 Wire Connection

Output Type	ON State LED <b>ON</b> Readback as <b>1</b>	OFF State LED <b>OFF</b> Readback as <b>0</b>
DC-SSR Output		

### I-8066 Dimention

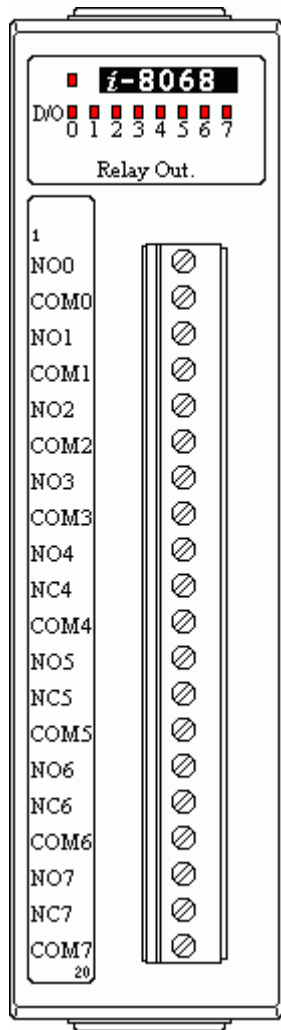


### I-8068 Specification

<b>Relay Output</b>	Output Channel	8
	Relay Type	Form A : Relay 0 to 3 Form C : Relay 4 to 7
	Contact Rating	0.5A@125VAC 1A@30VDC
	Operate/Release Time	7mS/3mS
	Life	$2 \times 10^5$

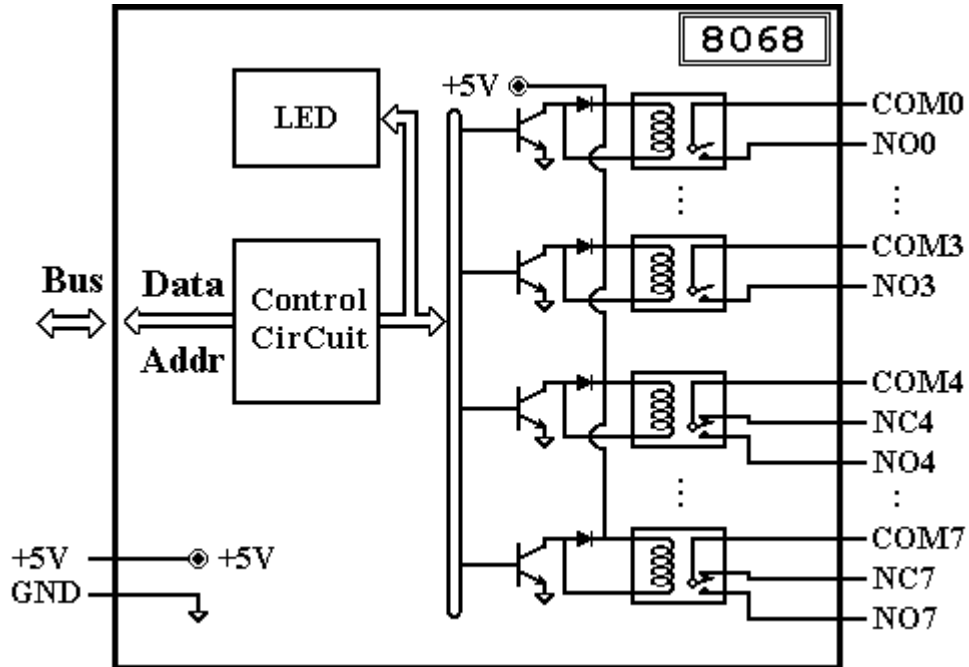
	Dielectric Strength	Coil to contacts : 1500VAC Open contacts : 1000VAC
<b>LED Display</b>	1 LED as Power/Communication indicator 8 LEDs as relay output indicators	
<b>Power Consumption</b>	Typical : 0.5W Maximum : 1.9W	
<b>Note</b>	8068 : Internal Parallel Bus	

### I-8068 Pin Assignment



Terminal Number	Pin Name
1	NO0
2	COM0
3	NO1
4	COM1
5	NO2
6	COM2
7	NO3
8	COM3
9	NO4
10	NC4
11	COM4
12	NO5
13	NC5
14	COM5
15	NO6
16	NC6
17	COM6
18	NO7
19	NC7
20	COM7

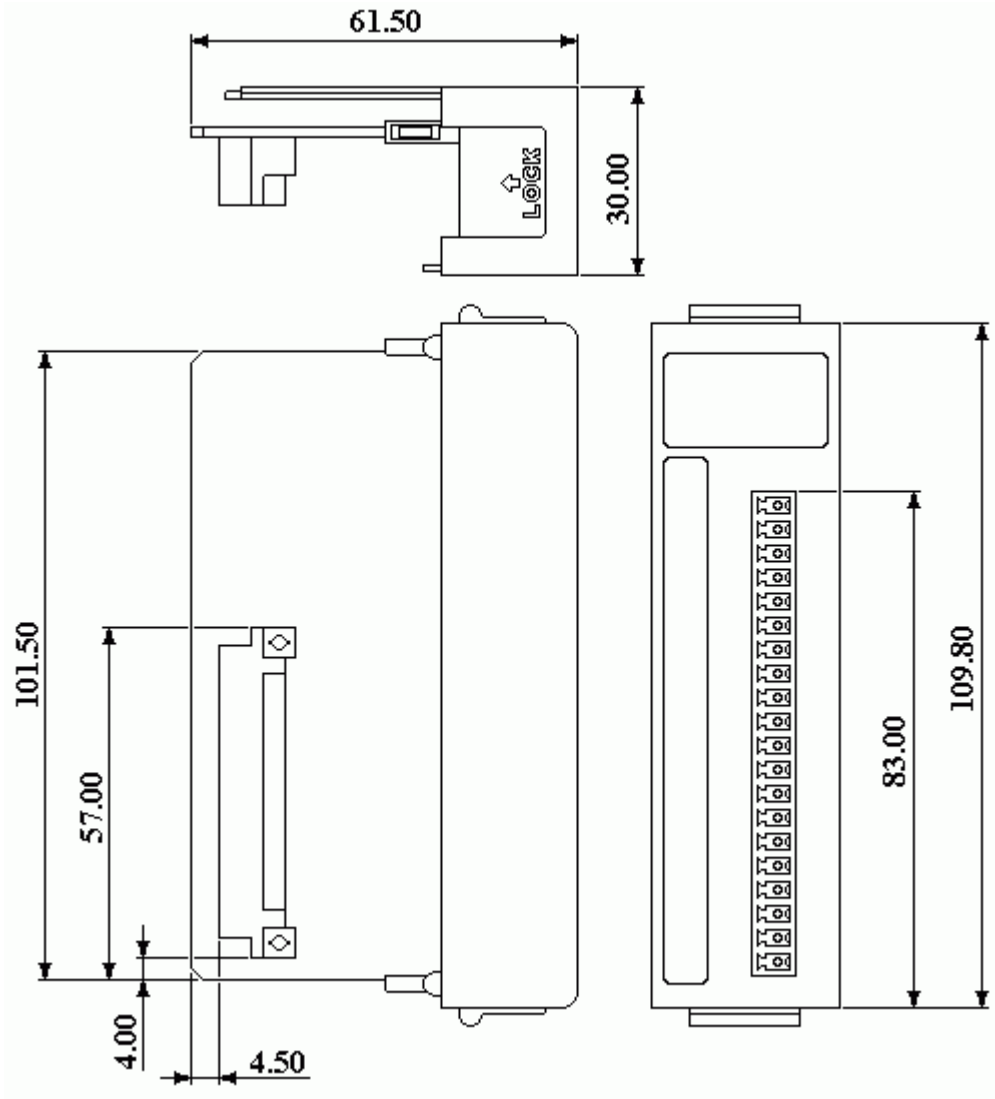
### I-8068 Internal I/O Structure



### I-8068 Wire Connection

Output Type	ON State LED <b>ON</b> Readback as <b>1</b>	OFF State LED <b>OFF</b> Readback as <b>0</b>
Form A Relay Contact		
Form C Relay Contact		

### I-8068 Dimention

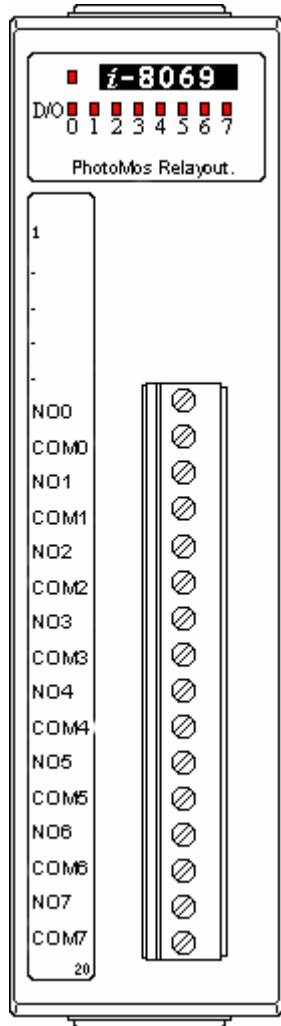


### I-8069 Specification

<b>PhotoMos Relay Output</b>	Outputs per module	8
	Load Current	0.13A max
	Load Voltage	350V max AC/DC
	Isolation Voltage	5000 VAC
	TurnOn Time	0.7 ms type
	TurnOff Time	0.05 ms type
<b>LED Display</b>	1 LED as Power/Communication indicator	

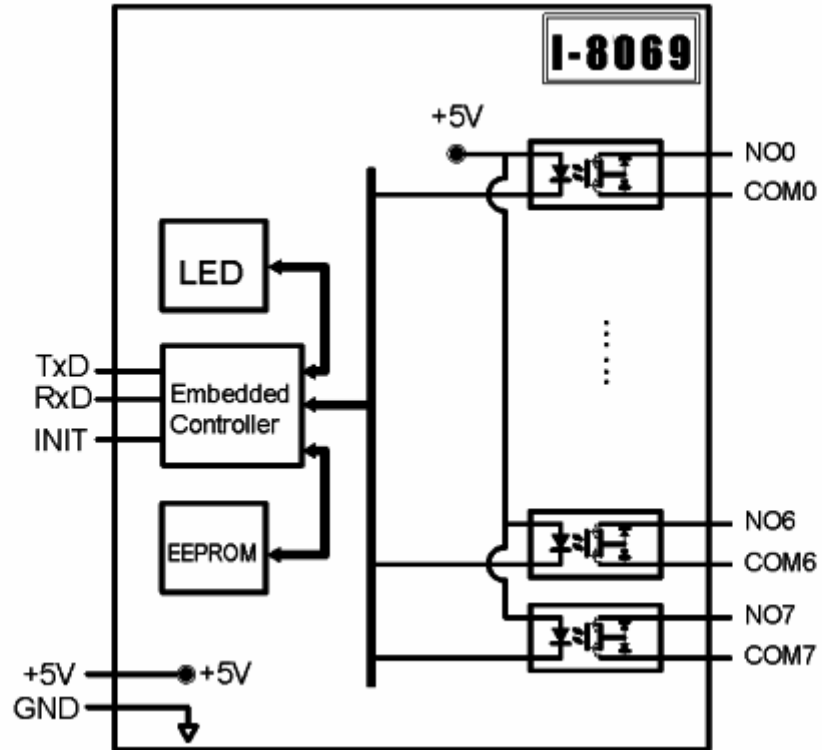
	8 LEDs as photo-mos relay output indicators
<b>Power Consumption</b>	Maximum : 0.5W

### I-8069 Pin Assignment



Terminal Number	Pin Name
5	NO0
6	COM0
7	NO1
8	COM1
9	NO2
10	COM2
11	NO3
12	COM3
13	N04
14	COM4
15	NO5
16	COM5
17	NO6
18	COM6
19	N007
20	COM7

### I-8069 Block Diagram



### I-8069 Wire Connection

Output Type	ON State LED <b>ON</b> Readback as <b>1</b>	OFF State LED <b>OFF</b> Readback as <b>0</b>
Form A Relay Contact		

Note : The max load current = 0.13A

### I-8069 Dimention

