



**ET-2261**

**ET-2261-16**

Ethernet I/O Module with Power Relay Outputs

## Features

- Built-in Web Server
- Support Modbus TCP/UDP and MQTT Protocols
- Powerful 32-bit MCU Handles Efficient Network Traffic
- 2-port Ethernet Switch (LAN Bypass) for Daisy-Chain Wiring
- Dual Watchdog
- I/O Pair Connection (Push and Poll)
- Supports web configuration and firmware update via Ethernet
- Built-in Power Relay Output Channels
  - ET-2261: 10-channel
  - ET-2261-16: 16-channel
- LED Display to Indicate the I/O status



## Introduction

The ET-2261/ET-2261-16 provides 10/16 Form A electromechanical Relays Output channels. With 2 Ethernet ports, the ET-2261/ET-2261-16 allows daisy chain connection which permits the flexibility in locating devices, eases installation and lowers infrastructure costs. It features 8 kV ESD protection, 4 kV EFT protection, 3 kV surge and 3750 VDC I/O isolation to enhance noise protection capabilities in industrial environments.

## System Specifications

Model	ET-2261	ET-2261-16
<b>System</b>		
CPU	32-bit ARM	
<b>Communication</b>		
Ethernet Port	2 x RJ-45, 10/100 Base-TX, Switch Ports	
Protocol	Modbus TCP, Modbus UDP, and MQTT	
Security	Password and IP Filter	
I/O Pair Connection	Yes (Push, Poll)	
Dual Watchdog	Yes, Module, Communication (Programmable)	
LAN Bypass	Yes	
<b>LED Indicators</b>		
System Running	Yes	
Ethernet Link/Act	Yes	
DI/DO status	Yes	
<b>2-Way Isolation</b>		
Ethernet	1500 Vdc	
I/O	3000 Vdc	
<b>EMS Protection</b>		
ESD (IEC 61000-4-2)	±8 kV Contact for Each Terminal and ±16 kV Air for Random Point	
EFT (IEC 61000-4-4)	±4 kV for Power Line	
Surge (IEC 61000-4-5)	±3 kV for Power Line	
<b>Power</b>		
Reverse Polarity Protection	Yes	
Powered from Terminal Block	+10 ~ +30 Vdc	+10 ~ +48 VDC
Consumption	3.3 W (Max.)	24 V: 4.32 W (Max.) 48 V: 4.71 W (Max.)
<b>Mechanical</b>		
Dimensions (mm)	33 x 127 x 99 (W x L x H)	31 x 157 x 129 (W x L x H)
Installation	DIN-Rail Mounting	
<b>Environment</b>		
Operating Temperature	-25 ~ +75°C	
Storage Temperature	-30 ~ +80°C	
Humidity	10 ~ 90% RH, Non-condensing	

## I/O Specifications

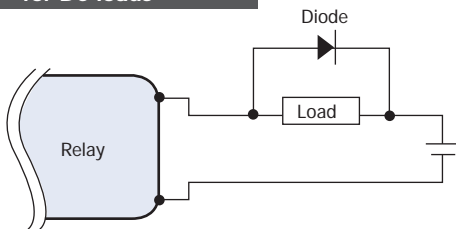
Model	ET-2261	ET-2261-16
<b>Power Relay</b>		
Channels	10	16
Type	Power Relay, Form A (SPST N.O.)	
Contact Rating	5 A @ 250 VAC/24 VDC (Resistive Load)	
Min. Contact Load	10 mA @ 5 V	
Operate Time	10 ms (max.)	
Release Time	5 ms (max.)	
Mechanical Endurance	2 × 10 <sup>7</sup> ops.	
Electrical Endurance	10 <sup>5</sup> ops.	
Power-on Value	Yes (Programmable)	
Safe Value	Yes (Programmable)	

## Wire Connections

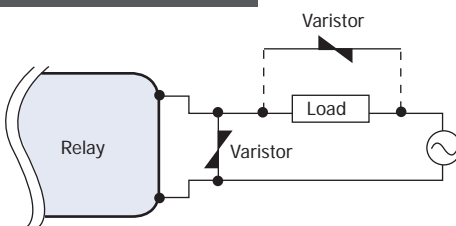
Power Relay	Relay Output
<b>ON State Readback as 1</b>	
<b>OFF State Readback as 0</b>	

**Note:** When inductive loads are connected to the relays, a large counter electromotive force may occur when the relay actuates because of the energy stored in the load. These flyback voltages can severely damage the relay contacts and greatly shorten the relay life. Limit these flyback voltages at your inductive load by installing a flyback diode for DC loads or a metal oxide varistor for AC loads.

### for DC loads



### for AC loads

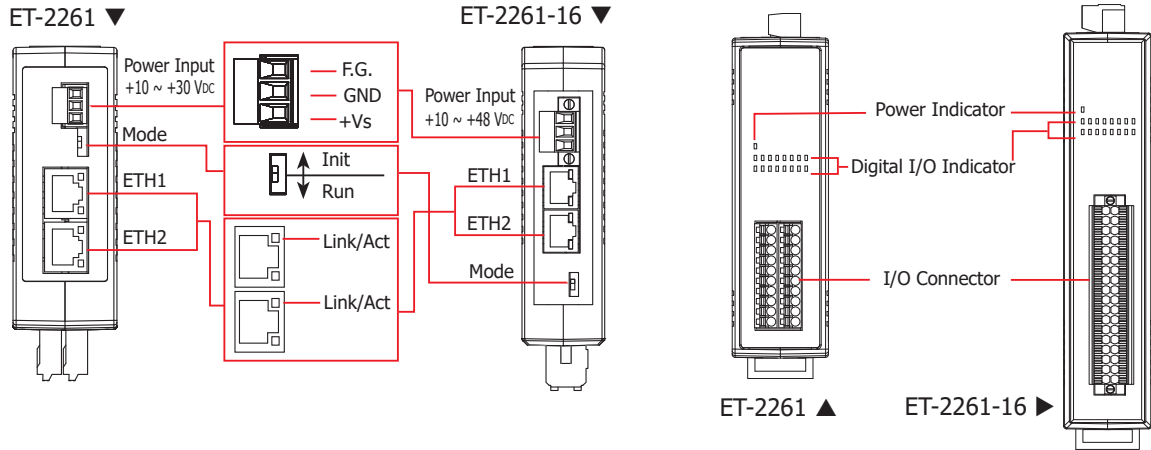


## Pin Assignments

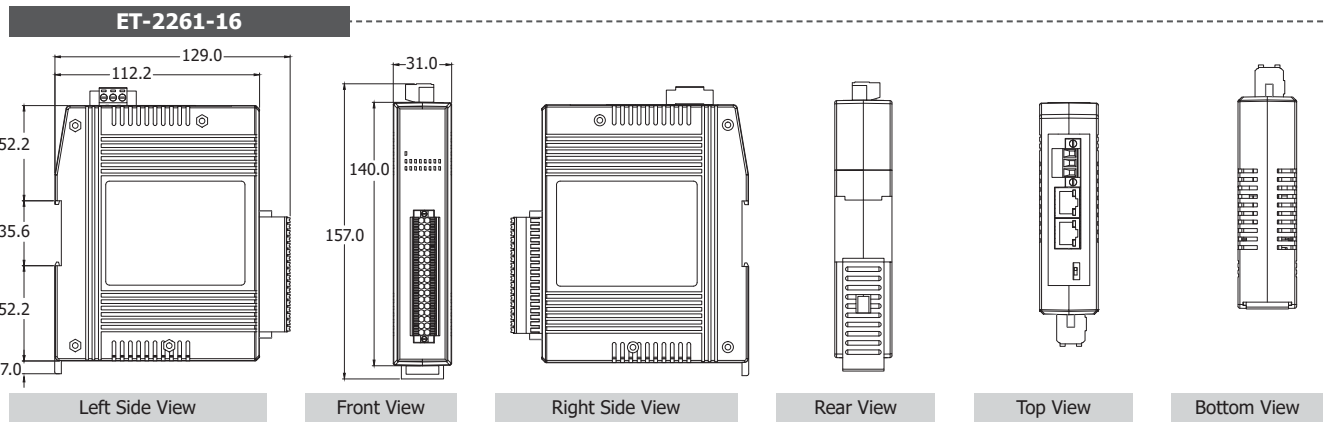
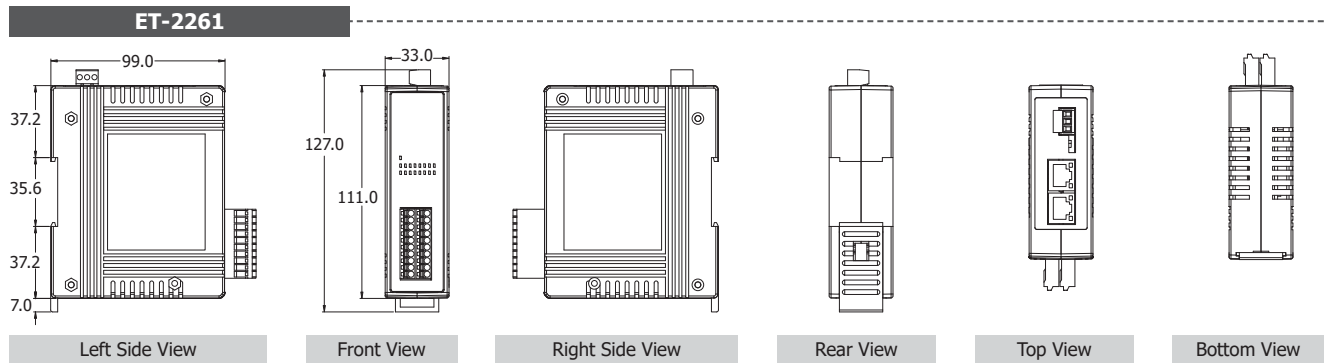
ET-2261																																													
	<table border="1"> <thead> <tr> <th>Terminal No.</th> <th>Pin Assignment</th> </tr> </thead> <tbody> <tr> <td>PWR</td> <td>F.G. GND + Vs</td> </tr> <tr> <td>ETH1</td> <td></td> </tr> <tr> <td>ETH2</td> <td></td> </tr> </tbody> </table>	Terminal No.	Pin Assignment	PWR	F.G. GND + Vs	ETH1		ETH2																																					
	Terminal No.	Pin Assignment																																											
	PWR	F.G. GND + Vs																																											
ETH1																																													
ETH2																																													
<table border="1"> <thead> <tr> <th>Pin Assignment</th> <th>Terminal No.</th> <th>No.</th> <th>Pin Assignment</th> </tr> </thead> <tbody> <tr><td>NO0</td><td>01</td><td>02</td><td>NO5</td></tr> <tr><td>COM0</td><td>03</td><td>04</td><td>COM5</td></tr> <tr><td>NO1</td><td>05</td><td>06</td><td>NO6</td></tr> <tr><td>COM1</td><td>07</td><td>08</td><td>COM6</td></tr> <tr><td>NO2</td><td>09</td><td>10</td><td>NO7</td></tr> <tr><td>COM2</td><td>11</td><td>12</td><td>COM7</td></tr> <tr><td>NO3</td><td>13</td><td>14</td><td>NO8</td></tr> <tr><td>COM3</td><td>15</td><td>16</td><td>COM8</td></tr> <tr><td>NO4</td><td>17</td><td>18</td><td>NO9</td></tr> <tr><td>COM4</td><td>19</td><td>20</td><td>COM9</td></tr> </tbody> </table>	Pin Assignment	Terminal No.	No.	Pin Assignment	NO0	01	02	NO5	COM0	03	04	COM5	NO1	05	06	NO6	COM1	07	08	COM6	NO2	09	10	NO7	COM2	11	12	COM7	NO3	13	14	NO8	COM3	15	16	COM8	NO4	17	18	NO9	COM4	19	20	COM9	
Pin Assignment	Terminal No.	No.	Pin Assignment																																										
NO0	01	02	NO5																																										
COM0	03	04	COM5																																										
NO1	05	06	NO6																																										
COM1	07	08	COM6																																										
NO2	09	10	NO7																																										
COM2	11	12	COM7																																										
NO3	13	14	NO8																																										
COM3	15	16	COM8																																										
NO4	17	18	NO9																																										
COM4	19	20	COM9																																										

ET-2261-16																																																																													
	<table border="1"> <thead> <tr> <th>Terminal No.</th> <th>Pin Assignment</th> </tr> </thead> <tbody> <tr> <td>PWR</td> <td>F.G. GND + Vs</td> </tr> <tr> <td>ETH1</td> <td></td> </tr> <tr> <td>ETH2</td> <td></td> </tr> </tbody> </table>	Terminal No.	Pin Assignment	PWR	F.G. GND + Vs	ETH1		ETH2																																																																					
	Terminal No.	Pin Assignment																																																																											
	PWR	F.G. GND + Vs																																																																											
ETH1																																																																													
ETH2																																																																													
<table border="1"> <thead> <tr> <th>Pin Assignment</th> <th>Terminal No.</th> <th>No.</th> <th>Pin Assignment</th> </tr> </thead> <tbody> <tr><td>NO0</td><td>01</td><td>19</td><td>COM0</td></tr> <tr><td>NO1</td><td>02</td><td>20</td><td>COM1</td></tr> <tr><td>NO2</td><td>03</td><td>21</td><td>COM2</td></tr> <tr><td>NO3</td><td>04</td><td>22</td><td>COM3</td></tr> <tr><td>NO4</td><td>05</td><td>23</td><td>COM4</td></tr> <tr><td>NO5</td><td>06</td><td>24</td><td>COM5</td></tr> <tr><td>NO6</td><td>07</td><td>25</td><td>COM6</td></tr> <tr><td>NO7</td><td>08</td><td>26</td><td>COM7</td></tr> <tr><td>N/A</td><td>09</td><td>27</td><td>N/A</td></tr> <tr><td>N/A</td><td>10</td><td>28</td><td>N/A</td></tr> <tr><td>NO8</td><td>11</td><td>29</td><td>COM8</td></tr> <tr><td>NO9</td><td>12</td><td>30</td><td>COM9</td></tr> <tr><td>NO10</td><td>13</td><td>31</td><td>COM10</td></tr> <tr><td>NO11</td><td>14</td><td>32</td><td>COM11</td></tr> <tr><td>NO12</td><td>15</td><td>33</td><td>COM12</td></tr> <tr><td>NO13</td><td>16</td><td>34</td><td>COM13</td></tr> <tr><td>NO14</td><td>17</td><td>35</td><td>COM14</td></tr> <tr><td>NO15</td><td>18</td><td>36</td><td>COM15</td></tr> </tbody> </table>	Pin Assignment	Terminal No.	No.	Pin Assignment	NO0	01	19	COM0	NO1	02	20	COM1	NO2	03	21	COM2	NO3	04	22	COM3	NO4	05	23	COM4	NO5	06	24	COM5	NO6	07	25	COM6	NO7	08	26	COM7	N/A	09	27	N/A	N/A	10	28	N/A	NO8	11	29	COM8	NO9	12	30	COM9	NO10	13	31	COM10	NO11	14	32	COM11	NO12	15	33	COM12	NO13	16	34	COM13	NO14	17	35	COM14	NO15	18	36	COM15	
Pin Assignment	Terminal No.	No.	Pin Assignment																																																																										
NO0	01	19	COM0																																																																										
NO1	02	20	COM1																																																																										
NO2	03	21	COM2																																																																										
NO3	04	22	COM3																																																																										
NO4	05	23	COM4																																																																										
NO5	06	24	COM5																																																																										
NO6	07	25	COM6																																																																										
NO7	08	26	COM7																																																																										
N/A	09	27	N/A																																																																										
N/A	10	28	N/A																																																																										
NO8	11	29	COM8																																																																										
NO9	12	30	COM9																																																																										
NO10	13	31	COM10																																																																										
NO11	14	32	COM11																																																																										
NO12	15	33	COM12																																																																										
NO13	16	34	COM13																																																																										
NO14	17	35	COM14																																																																										
NO15	18	36	COM15																																																																										

## Appearance



## Dimensions (Units: mm)



## Ordering Information

<b>ET-2261 CR</b>	Ethernet I/O Module with 2-port Ethernet Switch, 10-ch Power Relay Output (RoHS)
<b>ET-2261-16 CR</b>	Ethernet I/O Module with 2-port Ethernet Switch, 16-ch Power Relay Output (RoHS)

## Related Products

NS-205 CR	Unmanaged 5-Port Industrial Ethernet Switch with Power Input +10 ~ +30 VDC (RoHS)
NS-208 CR	Unmanaged 8-port Industrial 10/100 Base-TX Ethernet Switch with Power Input +10 ~ +30 VDC (RoHS)
DIN-KA52F CR	24 V/1.04 A, 25 W Power Supply with DIN-Rail Mounting (RoHS)
GPSU06U-6	24 V/0.25 A (max.) Power Supply