

# ANT-PA-5814-2

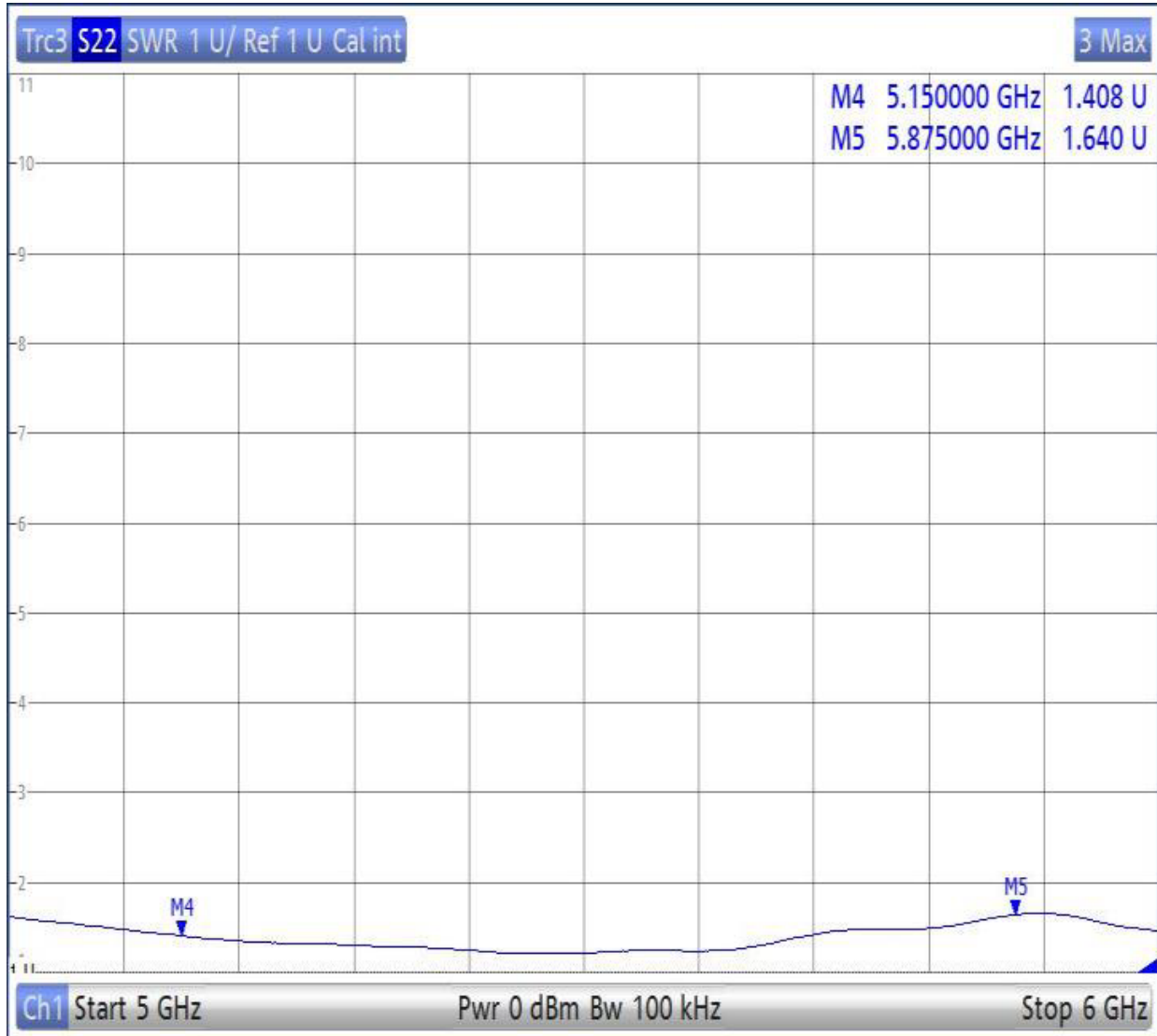
5.15~5.875GHz Outdoor Panel Antenna 14 dBi



## FEATURES

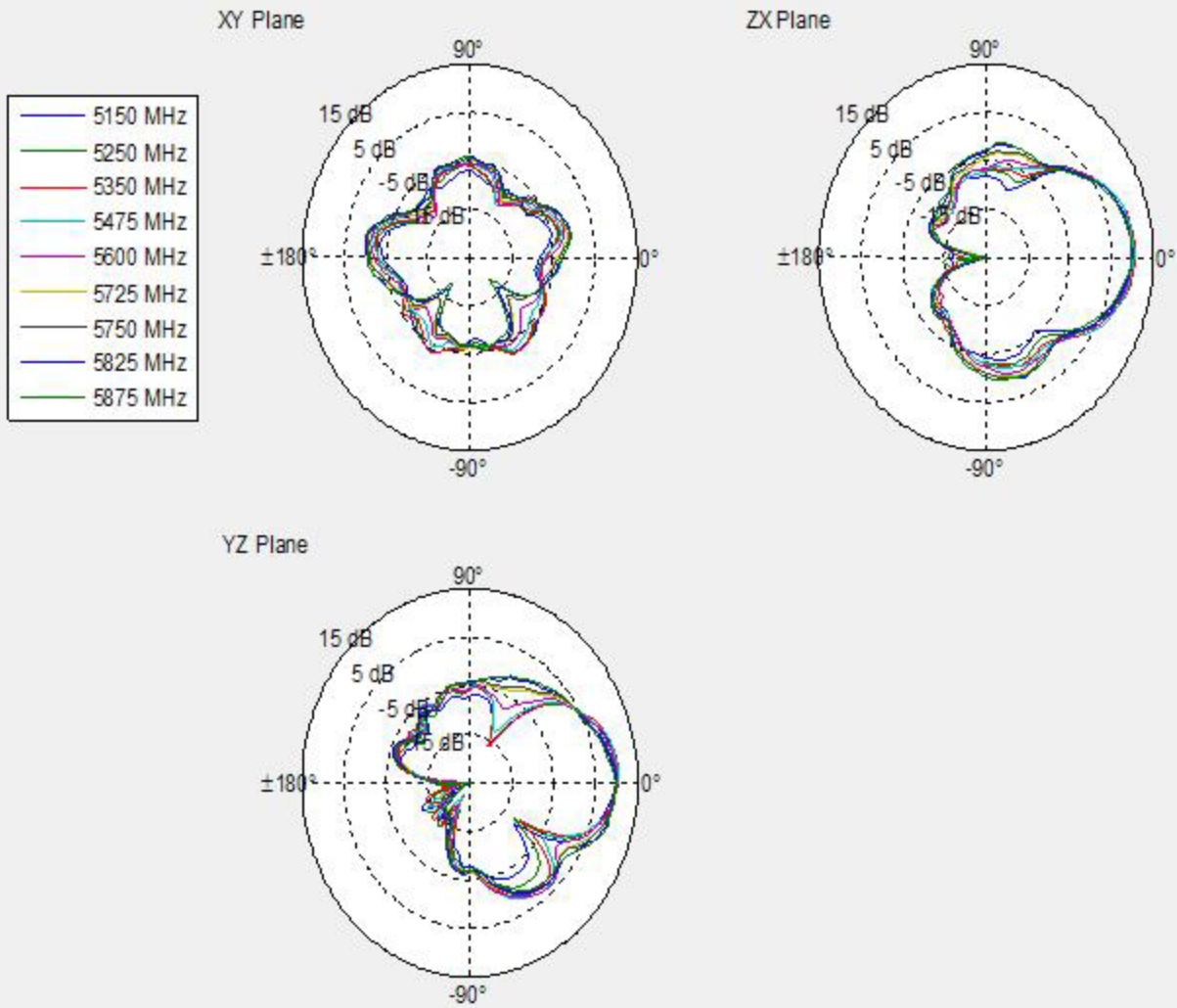
- ▶ Applications: IEEE 802.11a Wireless LAN
- ▶ Type: Outdoor Omni
- ▶ Frequency: 5.15~5.875GHz
- ▶ VSWR: 1.7
- ▶ Gain: 14 dBi
- ▶ Polarization: Vertical or Horizontal
- ▶ Power Handling: 50 Watt
- ▶ Impedance: 50 ohm
- ▶ Beam Width: H: 30° / V: 30°
- ▶ Connector: N Female
- ▶ Operation Temp: -40°C ~ 80°C
- ▶ Dimension: 118 x 95 x 30 mm
- ▶ Mounting: 32 ~ 45 mm (1.2 ~ 1.75 inch)
- ▶ Weight: 220g

## NETWORK ANALYZER TEST REPORT



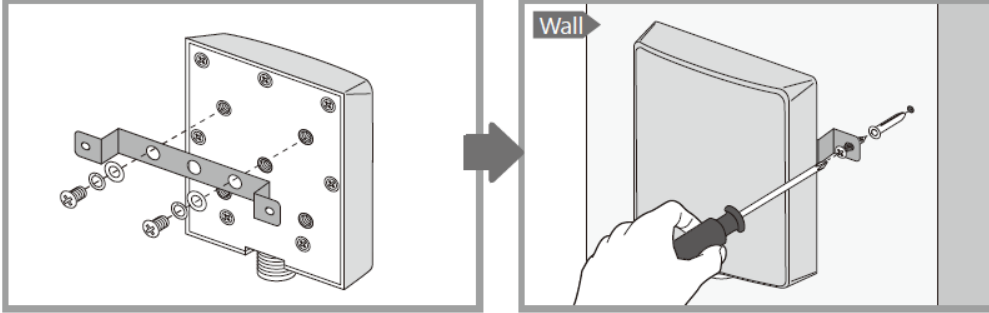
**RF CHAMBER TEST - 5.15 ~ 5.875GHz**

5G Band = 5100 - 5900 MHz



# MOUNTING KIT INSTALLATION

Wall Mount



Pole Mount

