

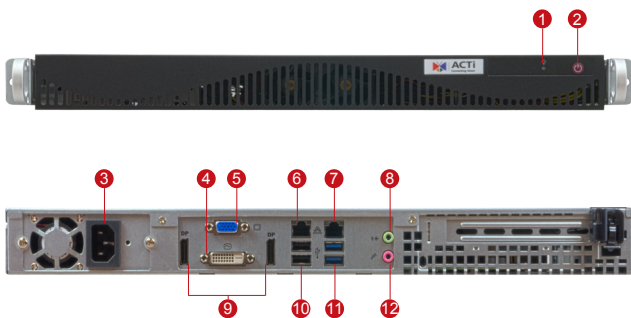
LPR-120

6-Channel 1-Bay ALPR Rackmount Standalone IVS



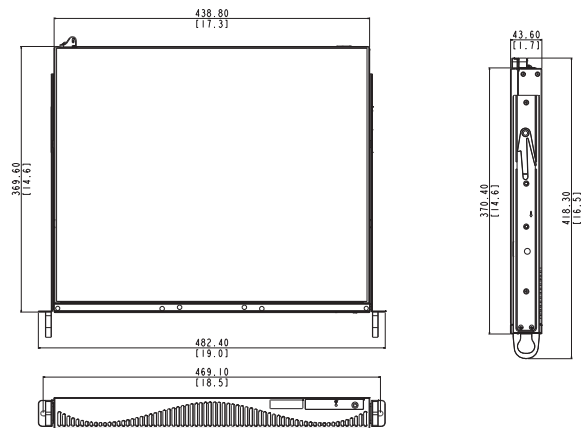
- Concurrent analysis of up to 6 channels for Automatic License Plate Recognition
- One region of interest per channel
- Searching and filtering based on time and vehicle color
- Convenient plate numbering searching
- Analysis for live and pre-recorded videos
- Blacklist and whitelist notification

PHOTO INDICATION



- | | |
|------------------|------------------|
| 1 Power Switch | 7 LAN 2 |
| 2 Power LED | 8 Line-Out Port |
| 3 AC Power Input | 9 Display Port |
| 4 DVI-D Port | 10 USB 2.0 Ports |
| 5 VGA Port | 11 USB 3.0 Ports |
| 6 LAN 1 | 12 Mic-In Port |

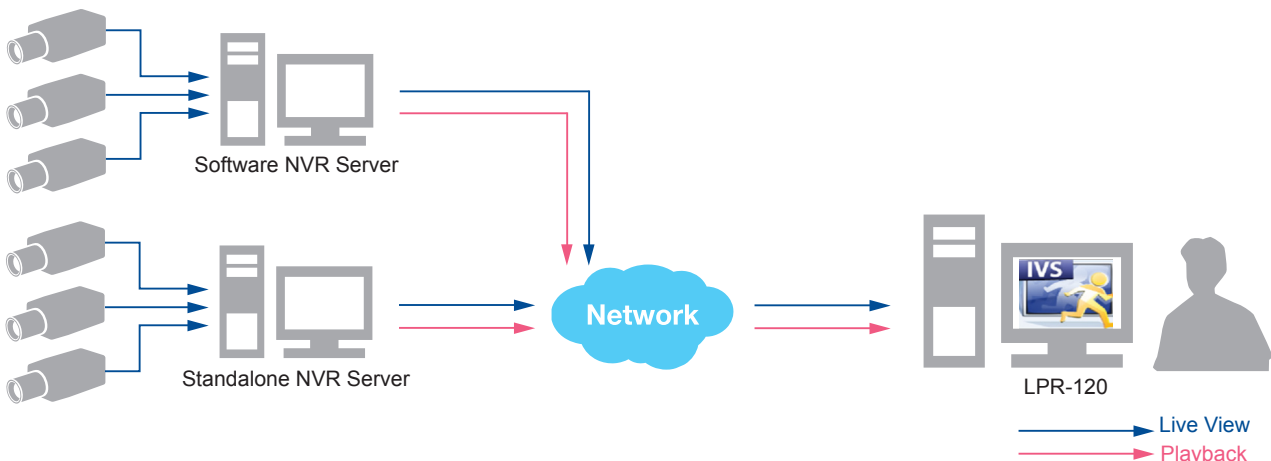
DIMENSION DIAGRAM



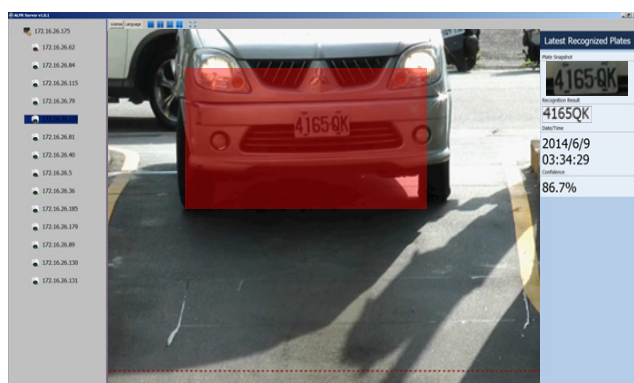
Unit: mm [inch]

SOLUTION ARCHITECTURE

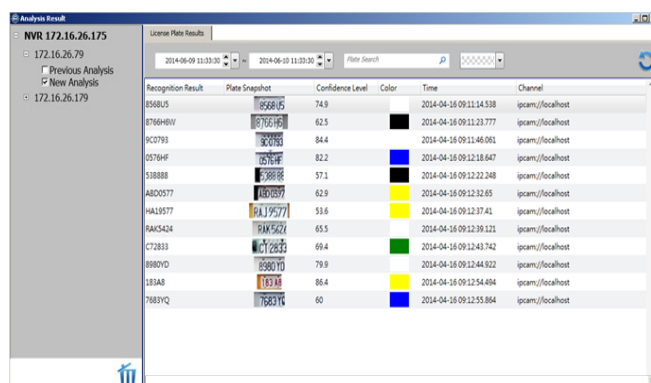
LPR-120



KEY FUNCTIONS



Automatically read license plates appearing in a preset area.



Convenient search for analysis result by time and vehicle color.

PRODUCT SPECIFICATION

LPR-120

• General

Maximum Number of Analytical channels	6
Bundled License	1 Channels
Video Compression	H.265, H.264, MPEG-4, MJPEG
Analyzed Stream	Live view and pre-recorded video from ACTi cameras, NVR 3 and standalone NVRs
Black and white list	Real-time notification and live view panel display
License Plates Supported	United States, United Kindom, Spain, Tanzania, Russia, Australia, Hungary, Georgia, Malta, South Korea, Taiwan, Hungarian, Western Australia, Canada, Costa Rica
Maximum local display resolution	1920x1080

• Live View

Display Layout Mode	1, 2, 3, 4, 9
---------------------	---------------

• Video Analytic Algorithms

Algorithm	Automatic License plate recognition (vehicle speed less than 60 km) with blacklist / whitelist notification
Maximum number of algorithms	1 algorithm per channel
Analyzed Stream	Live View, Playback
Analyzed Source	NVR, Camera, pre-recorded video

• Storage

Interface	Serial ATA
HDD Bay	Maximum 1 x 2.5" SATA disk (Disk not included)
External Storage Support	USB

• Search & Playback

Recording Search	Search video recordings by time, analytic rule, channel, and display the result with click-to-play snapshots
Playback Control	Pause; stop
Filter	By Time / Object Color
Wildcard Plate Numbering Searching	Yes
Analysis Result Export	Export video clips in RAW format and meta-data in XML

• Remote Access

PC Client Program	IVS client
Remote Client PC Requirements	Intel Core 2 Quad 2.4 GHz, 4GB RAM(Recommended: Intel Core i7-920 2.67 GHz, 4GB RAM)

• System

Operating System	Win 7 (64 bit) Std. Embedded
Language	English and Traditional Chinese Supported

• Hardware

CPU	Intel Processor
Dimensions (W x H x D)	437 x 369 x 43 mm (17.2" x 14.5" x 1.7")
Weight	6.4 kg (14.11 lb)
Operating Temperature	0 ~ 40° C (32°F ~ 104°F)
Power Source	AC 100-240V
Approvals	CE (EN 55022 Class B, EN 55024), FCC (Part15 Subpart B Class B), UL (for built-in power adapter)
USB	2 x USB 3.0 ports and 2 x USB 2.0 ports
Ethernet Port	LAN1: 10/100/1000 Mbps; LAN2: 10/100/1000 Mbps
Audio Port	Mic-in; Line-out
Display Port	DVI-D, VGA, Display Port

• Integration

Unified Solution	Fully compatible with ACTi cameras, encoders, central management system, TV wall and intelligent video surveillance software
------------------	------------------------------------------------------------------------------------------------------------------------------

* Performance might vary depending on the actual traffic flow being analyzed

* All specifications are subject to change without notice.

* All brand names and registered trademarks are the property of their respective owners.